

SAN JUAN RIVER

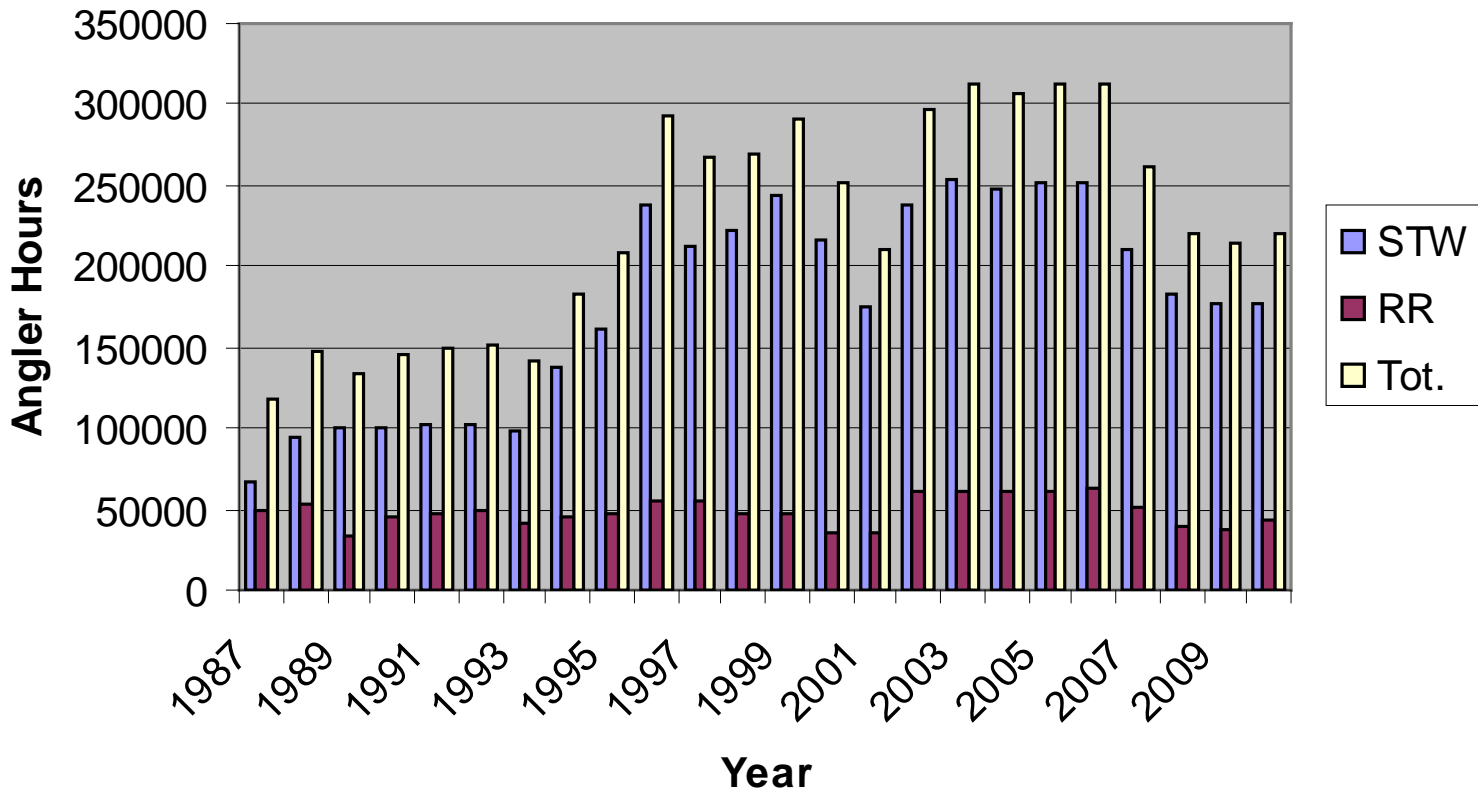
A wide-angle, high-angle photograph of the San Juan River. The river flows from the foreground towards the background, winding through a canyon. The banks are covered in dense, low-lying vegetation with vibrant autumn colors of yellow, orange, and brown. The canyon walls are composed of layered, light-colored rock formations, showing signs of erosion. In the distance, the river continues to flow through the canyon under a sky with scattered white clouds. The overall scene is a beautiful representation of a natural landscape in autumn.

“World Class Trout Fishery”

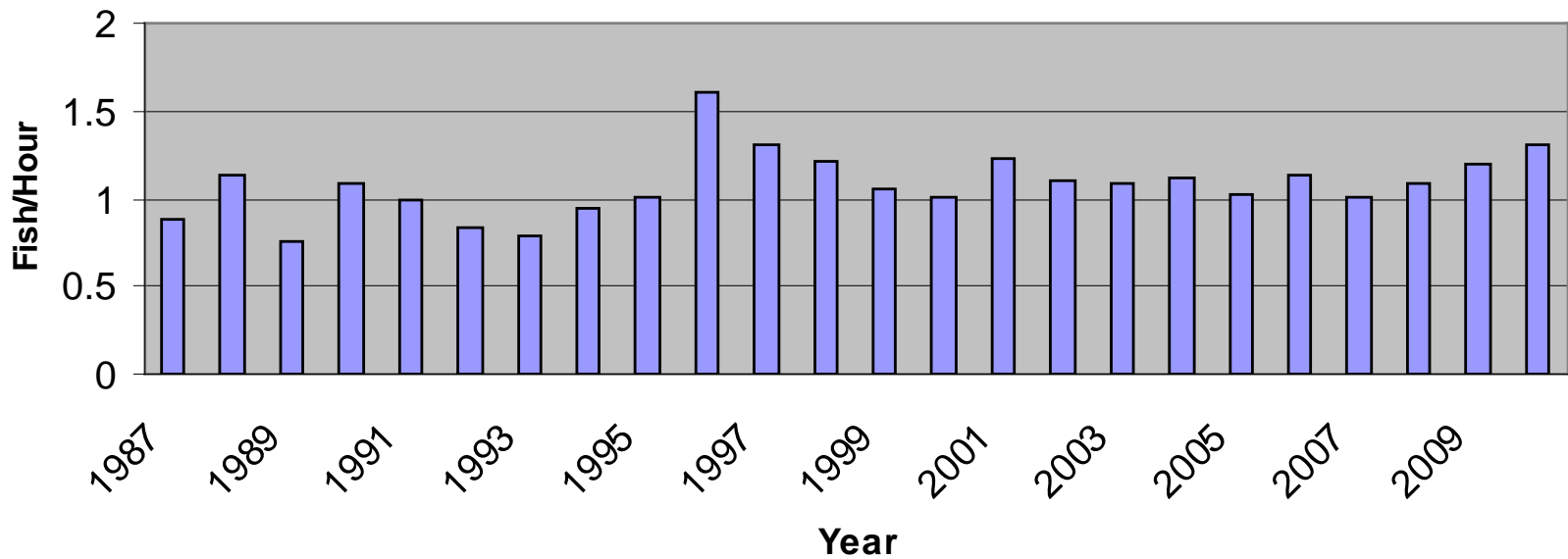
NMDGF/Marc's Definition of “World Class”

- An average catch-rate of 1.0 fish/hr
- 5% of the trout pop. exceeds 20 in.
- Fish appear vigorous, healthy, and provide a memorable experience
- 75% angler satisfaction

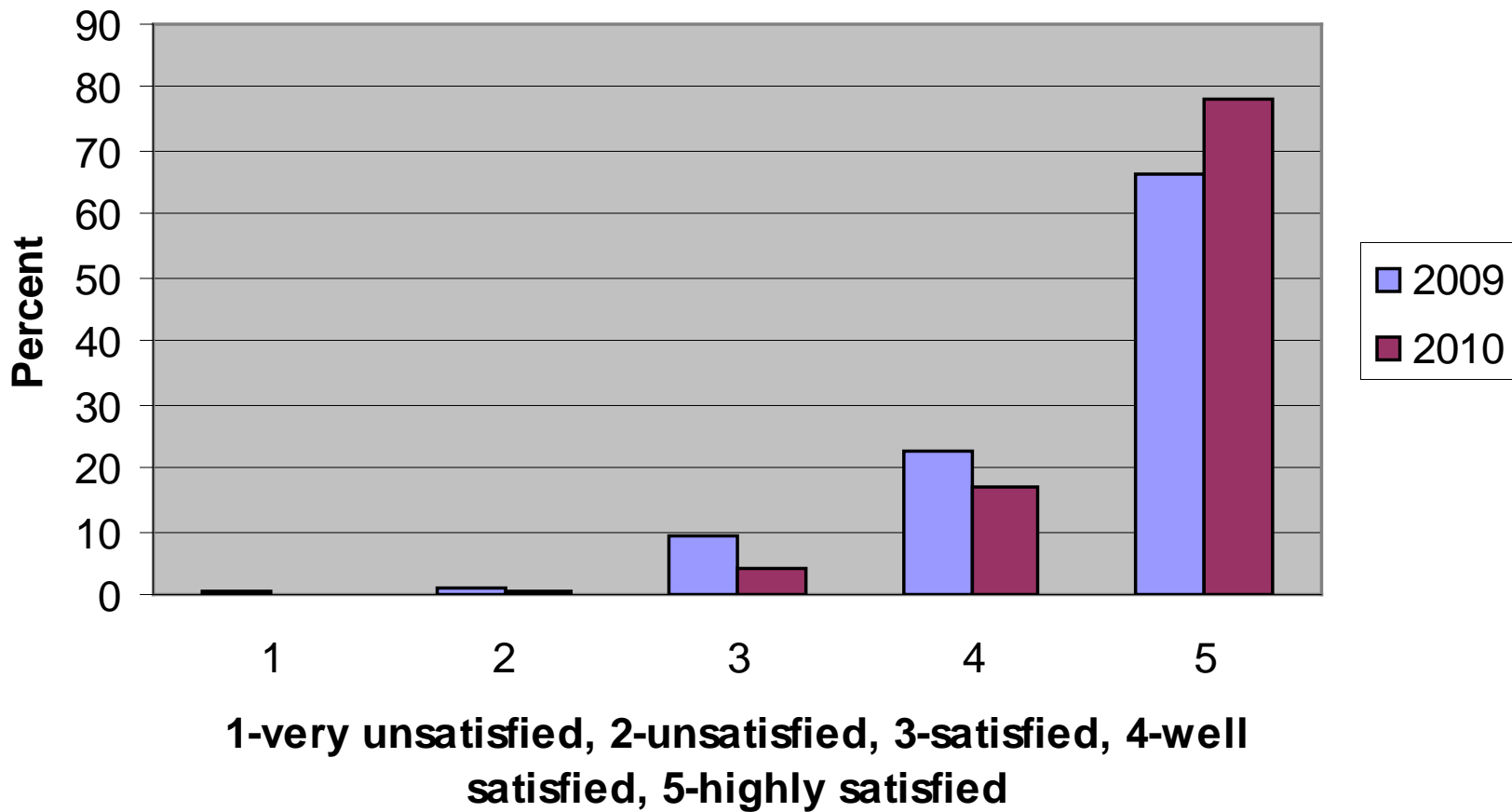
Angler Hours 1987-2010



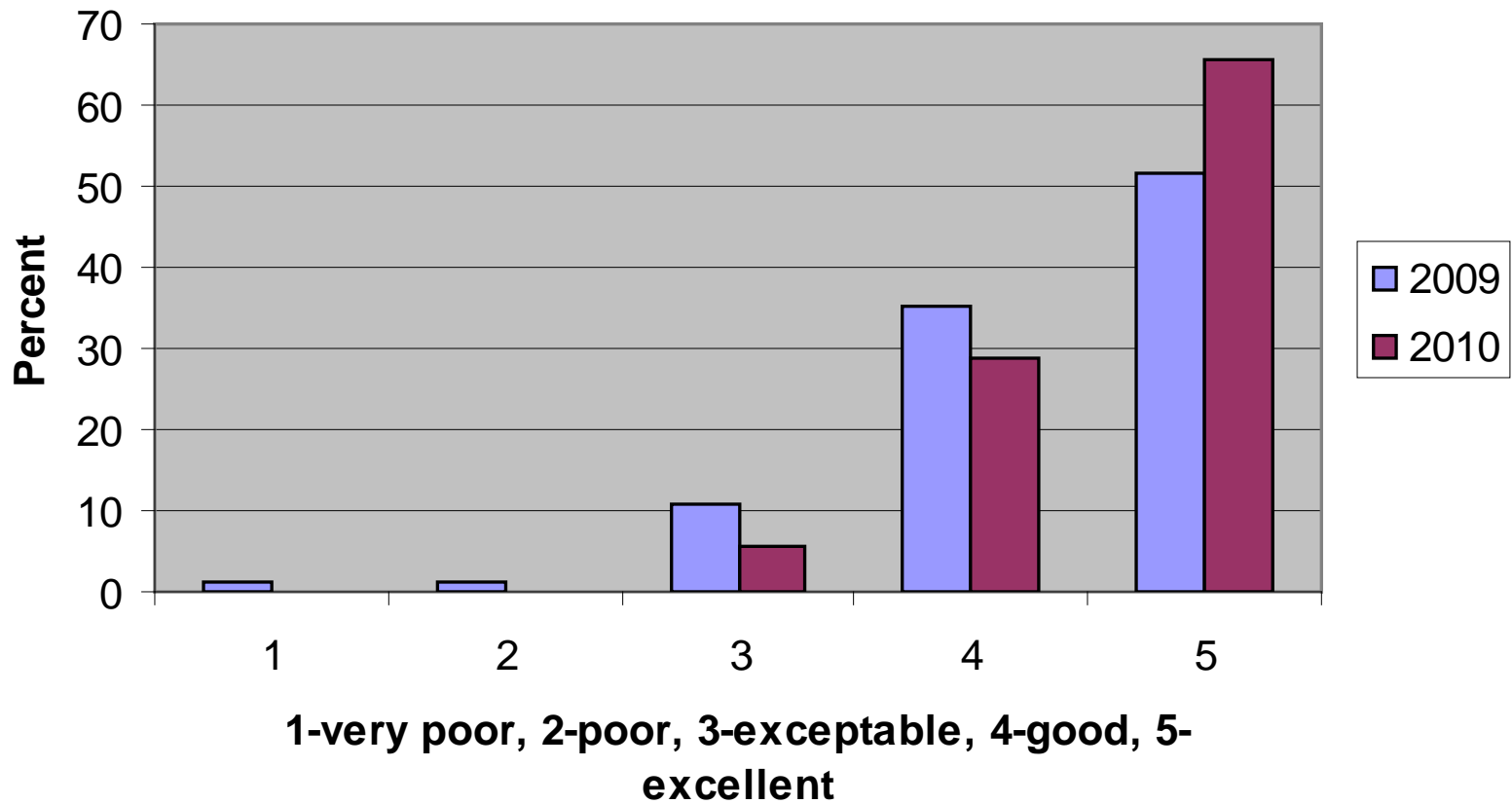
Catch Rates 1987-2010



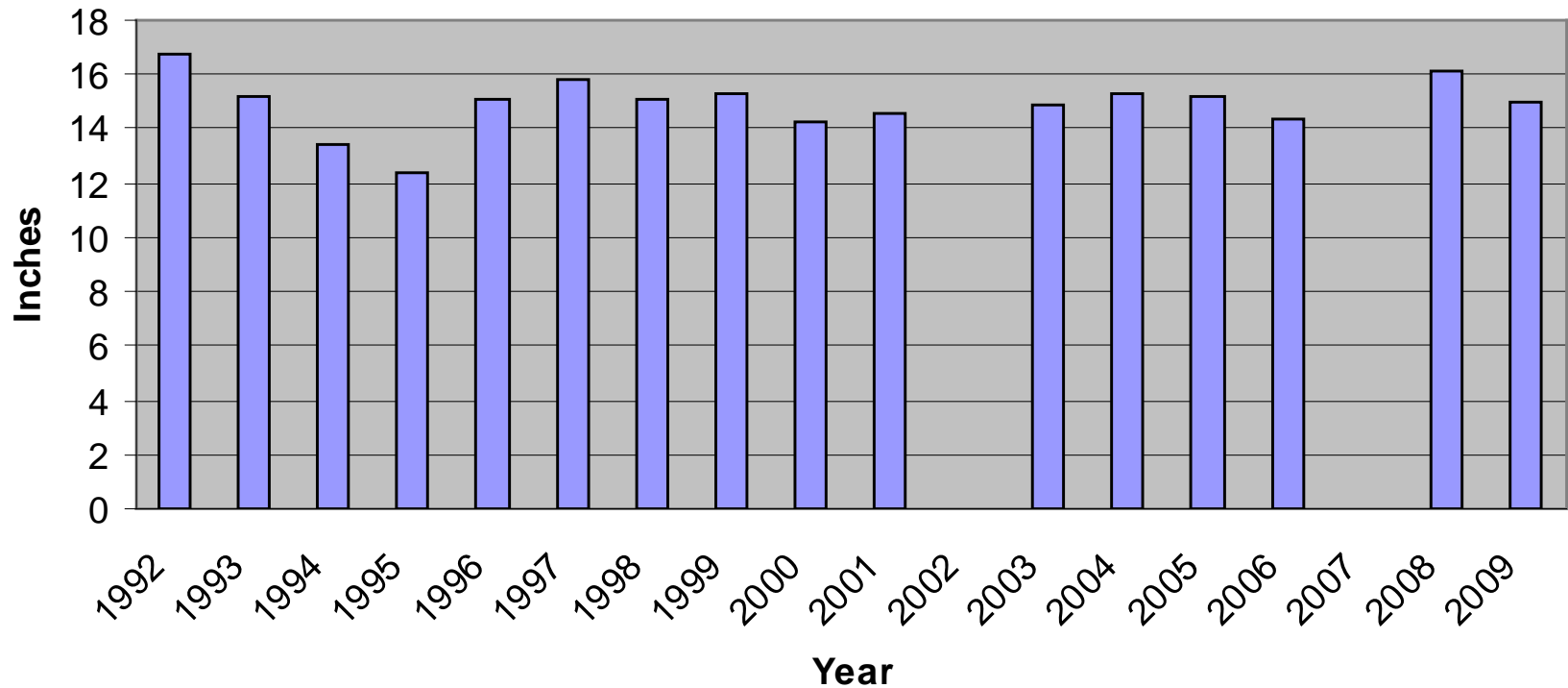
Angler Satisfaction 2009-2010



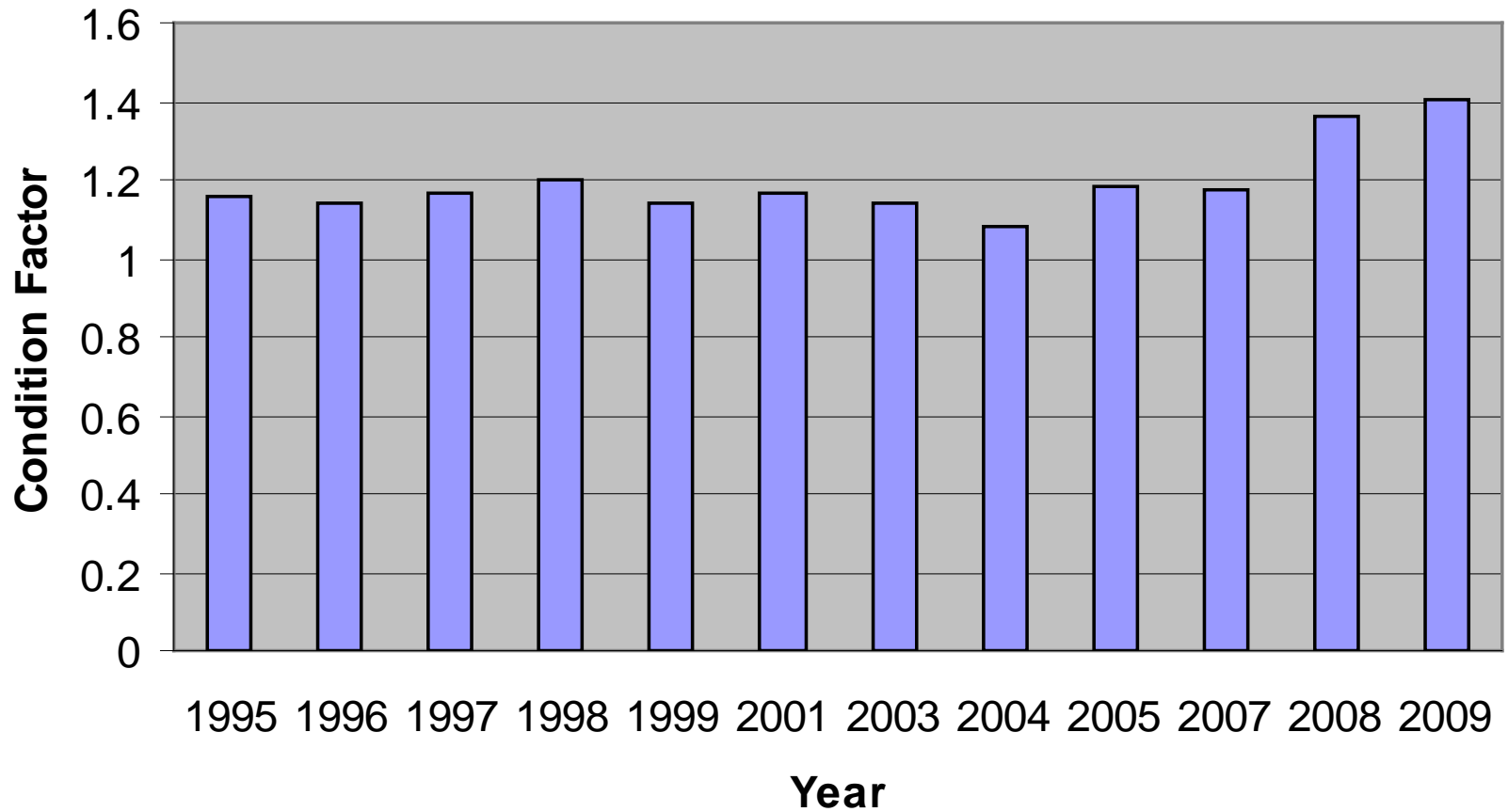
Angler Judged Fish Quality 2009-2010



Average Fish Size 1992-2009



Fish Condition 1995-2009



Sediment Control



In-Stream Habitat Project

