

Rio Grande Cutthroat Trout Management Update



Topics

- Status
- Rio Costilla
- Animas



➤ Historic Range

- 6,600 mi. CO/NM
- 3,400 mi. NM

➤ Current Range

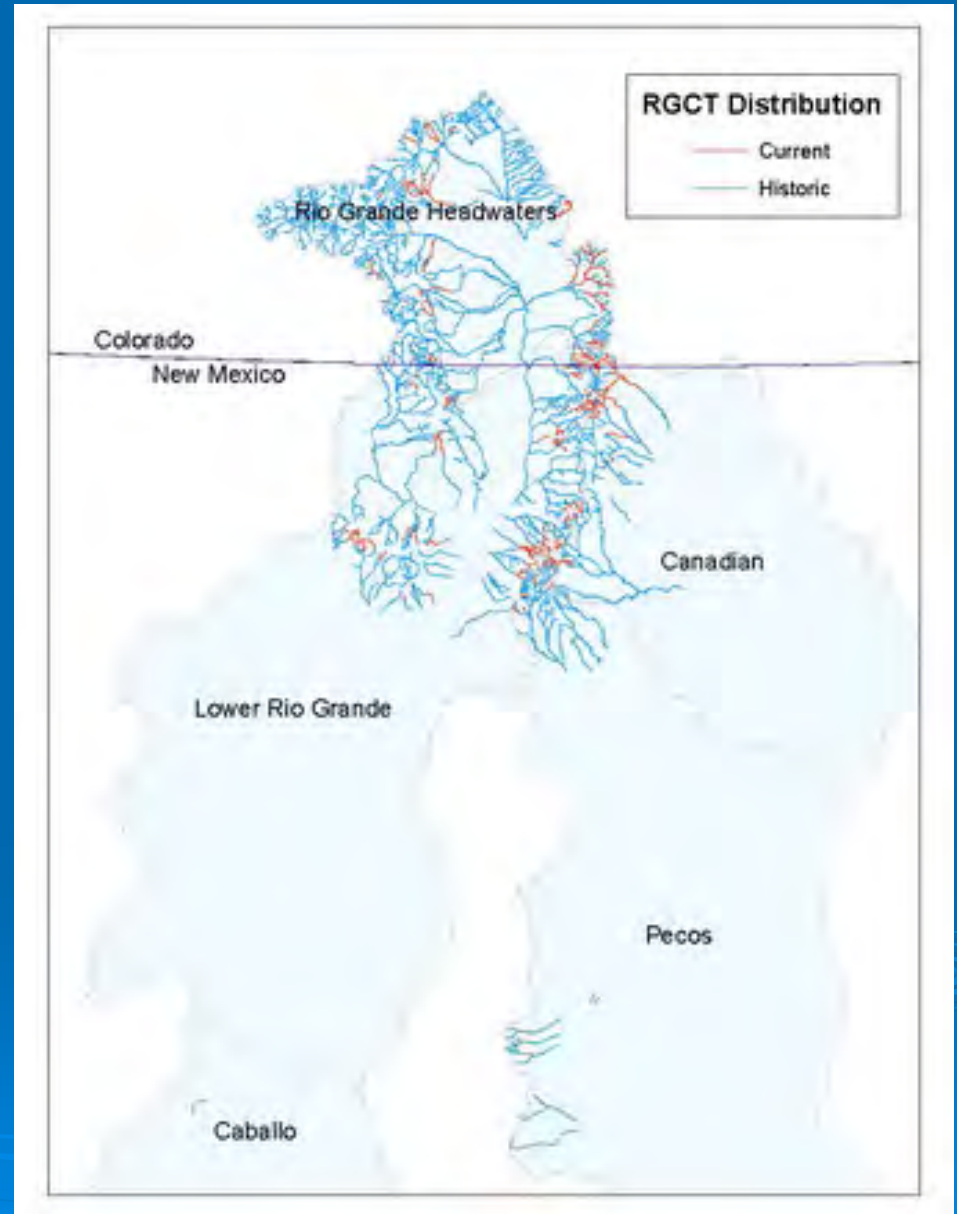
- 690 mi. CO/NM
- 390 mi. NM

➤ # of Pops.

- 120 in CO/NM
- 84 in NM

➤ ESA Candidate (2008)

- 8 populations met long-term persistence criteria

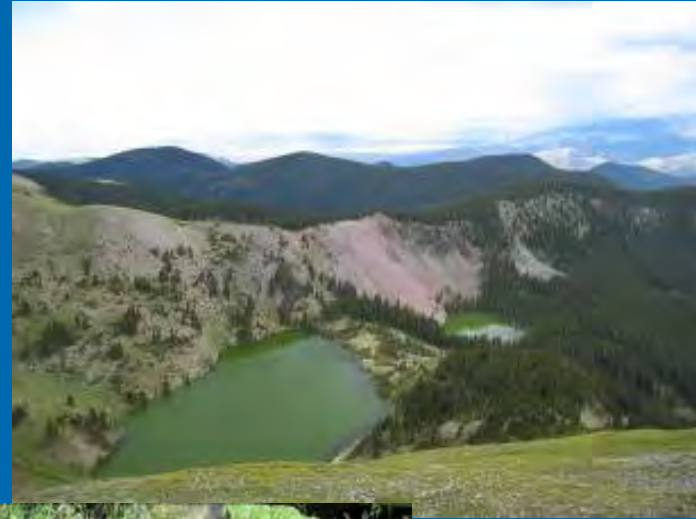


RGCT Management Plan

- Monitoring and Assessment
- Management
- Range Expansion
- Education and Outreach

Range Expansion

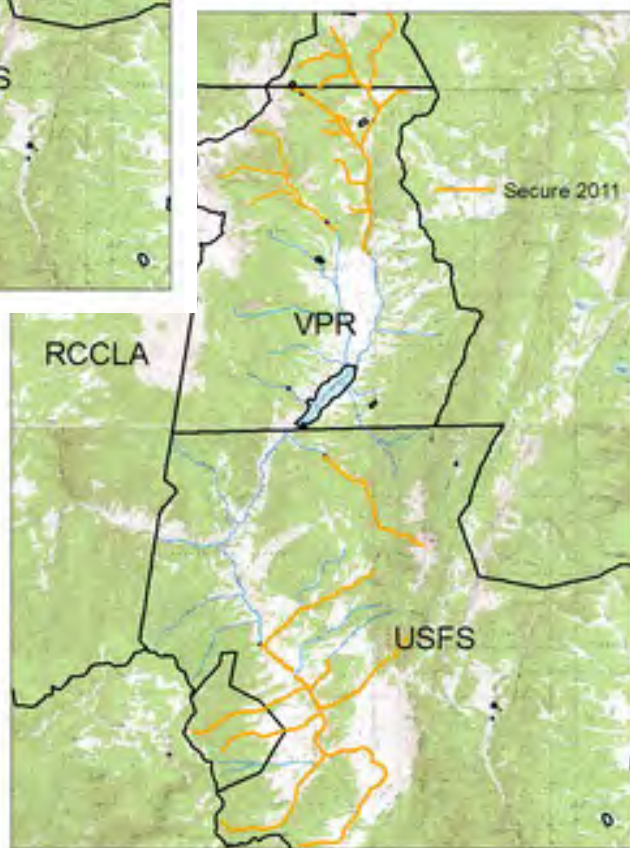
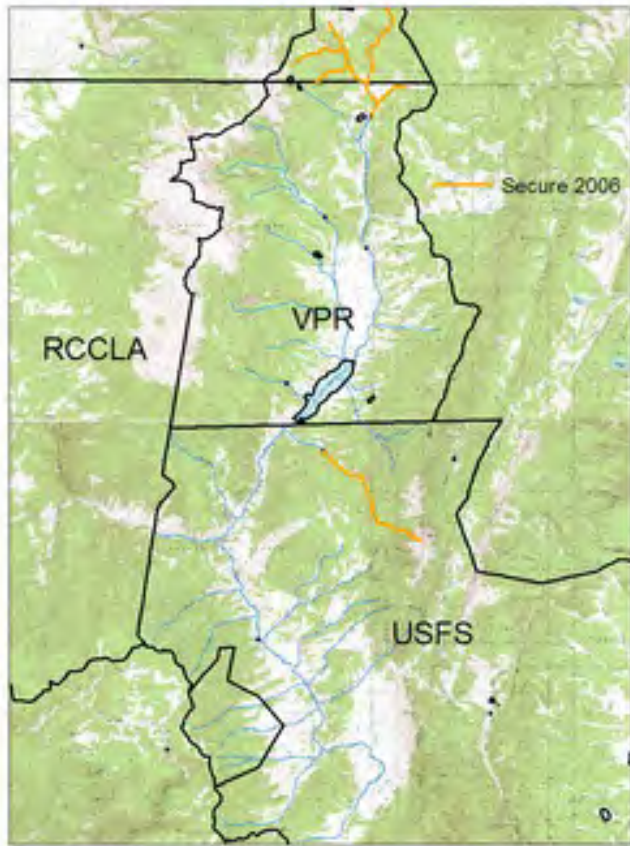
- Expand existing populations/habitat restoration
- Create new from existing (Core only)
- Remove non-native trout/fish with piscicide
- Native fish community



Rio Costilla

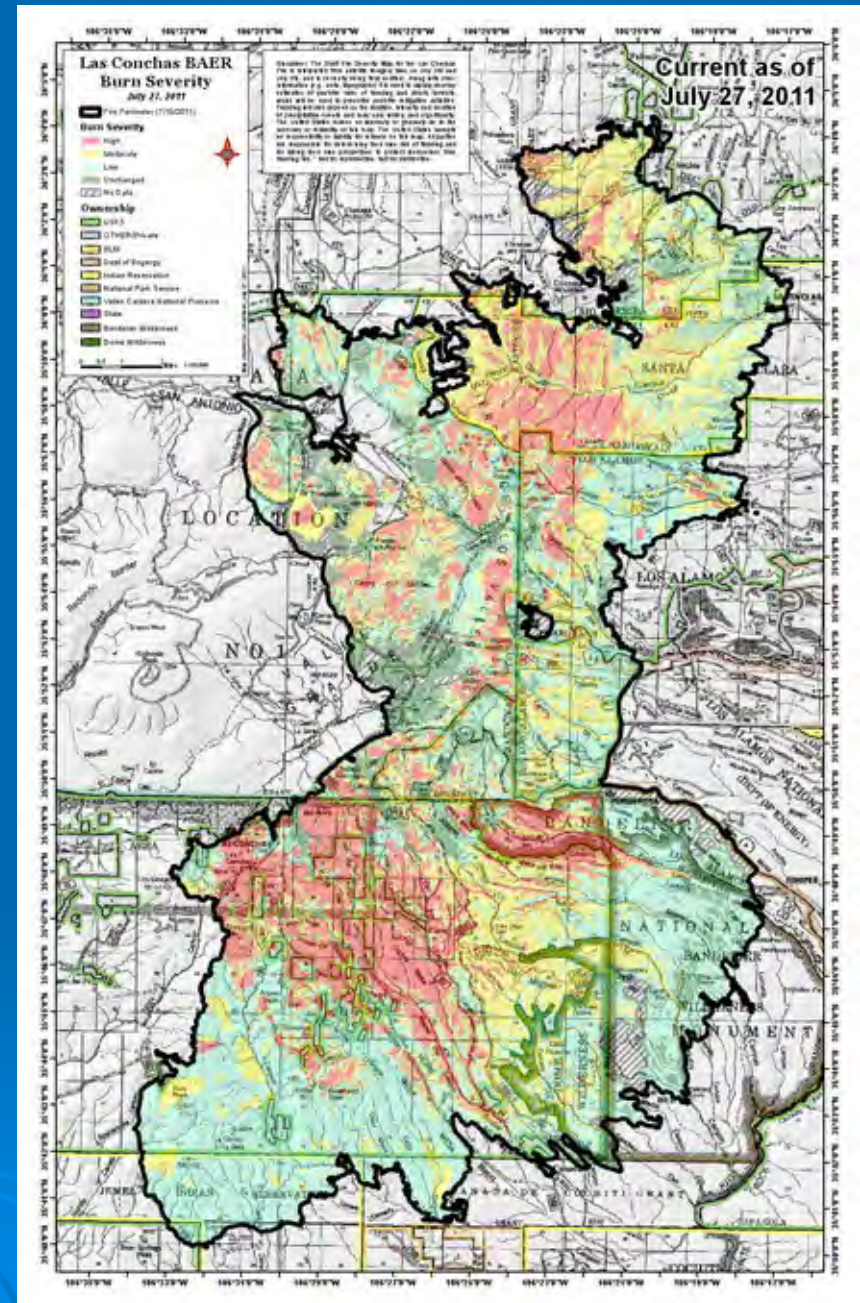
➤ Recent Progress

- Comanche Creek
- Costilla Creek
- Casias Lakes
- Santistevan Creek
- #2 Creek

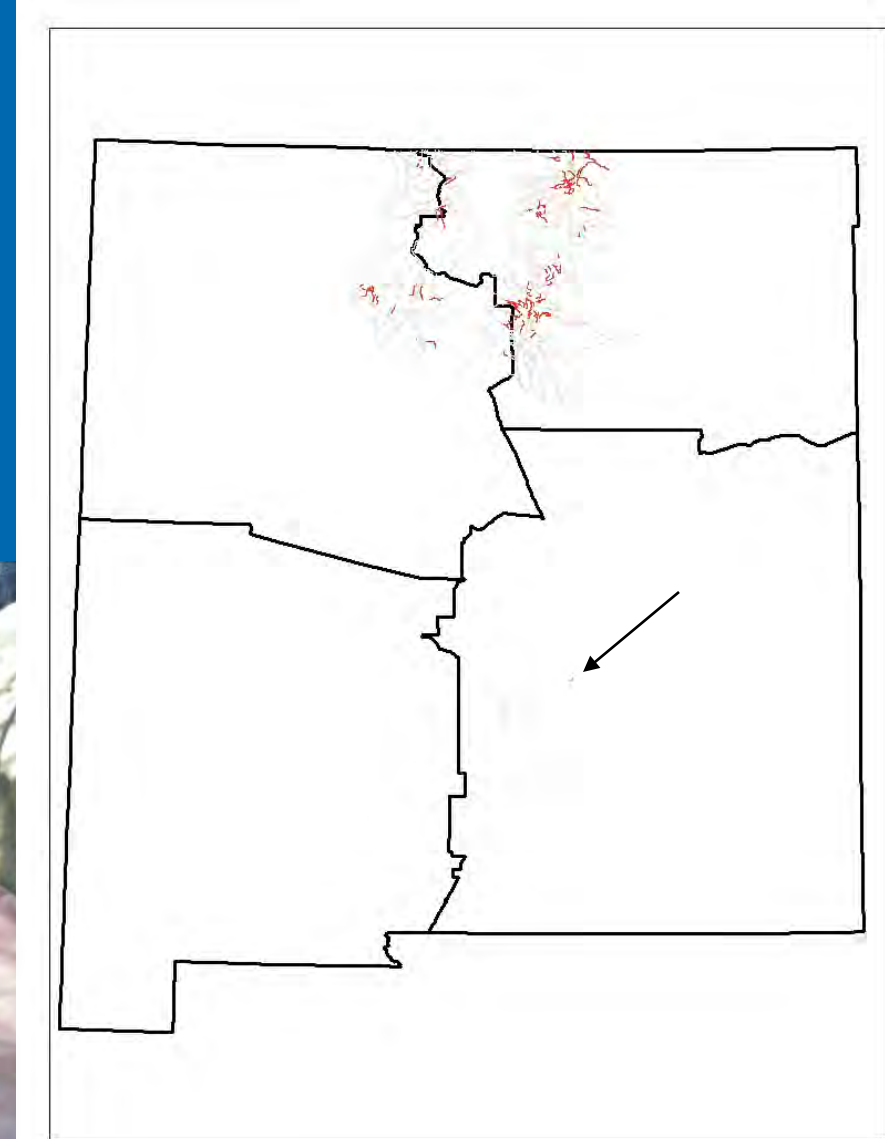


Wildfire

- Three pops???
- Other opportunities



Pinelodge Creek



Rio las Animas

- Delayed
- Genetic questions
- NEPA and WQCC
- Native fish

