



State Game Commission
Habitat Stamp Program Procedures

Agenda Item 16

December 9, 2010

by

Dale Hall, Habitat Stamp Program Manager
NM Dept. Game and Fish

What is the Habitat Stamp Program?

- A habitat management process authorized under the federal *Sikes Act*,
- A funding vehicle for wildlife habitat work,
- A forum for inter-agency coordination and collaboration, and
- An agency AND citizen partnership





HSP Partners





Tri-Agency HSP Review

Identified issues/problems

1. Maintenance
2. Enclosure Vandalism
3. Asset Inventory
4. Varying Agency Values
5. Citizen Participation
6. Formula Constraints
7. Billings



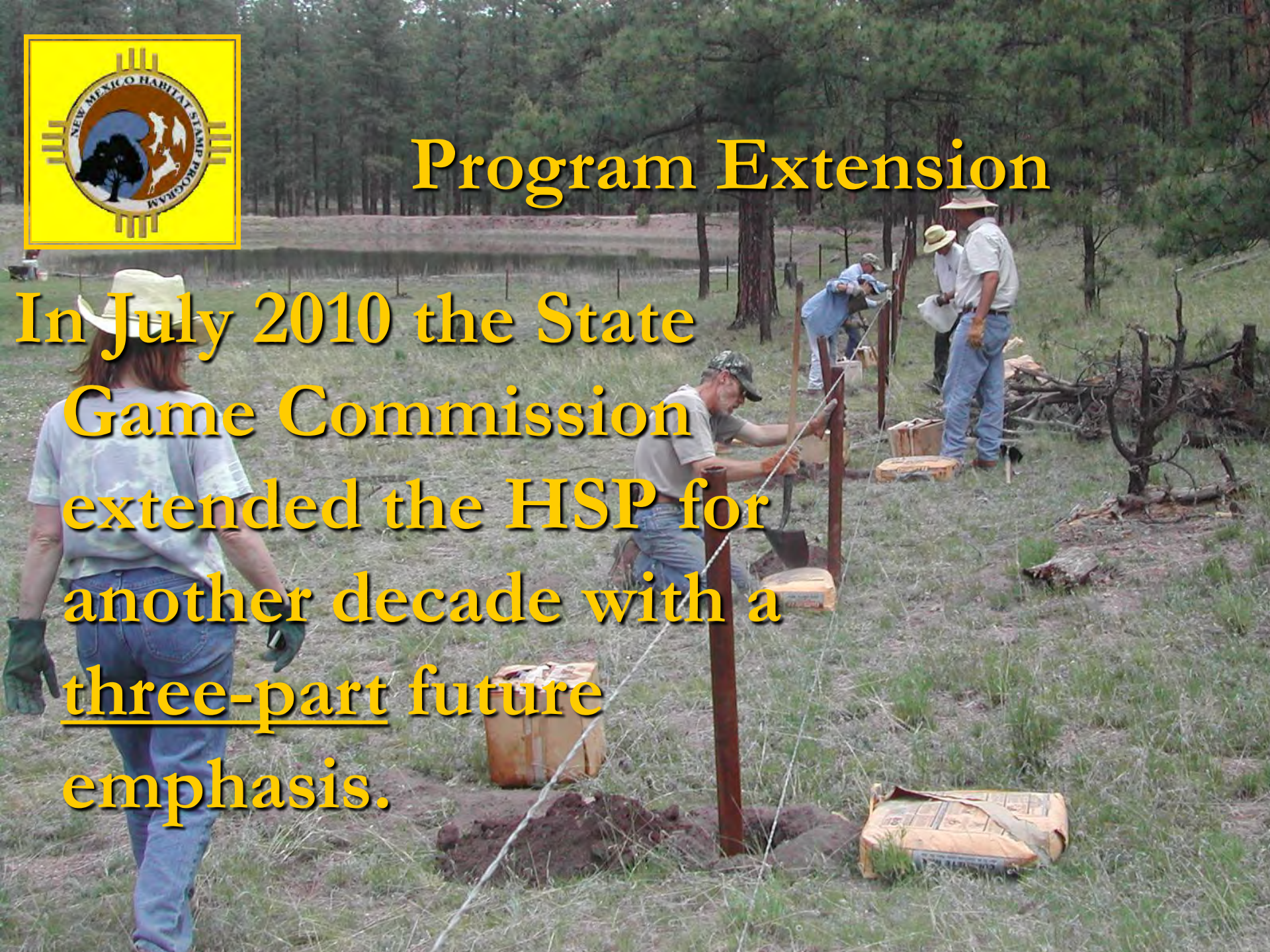
Commission Appoints Citizen Advisors

- 
- 35 citizens representing
 - Sportsmen
 - Fed land permittees
 - Environmentalists
 - Regional outlook
 - Rank proposal and recommend back to Commission



Program Extension

In July 2010 the State Game Commission extended the HSP for another decade with a three-part future emphasis.





Emphasis for Future

#1.--Maintain Current Structures



Emphasis for Future #2--More Fisheries/Aquatics Projects



Emphasis for Future

#3.--Citizen Involvement in a Landscape Approach

A photograph of two men in camouflage hats and plaid shirts examining a turkey outdoors. The man on the right is holding the turkey, and the man on the left is looking at it. The background shows a natural, outdoor setting with trees and a wooden structure.

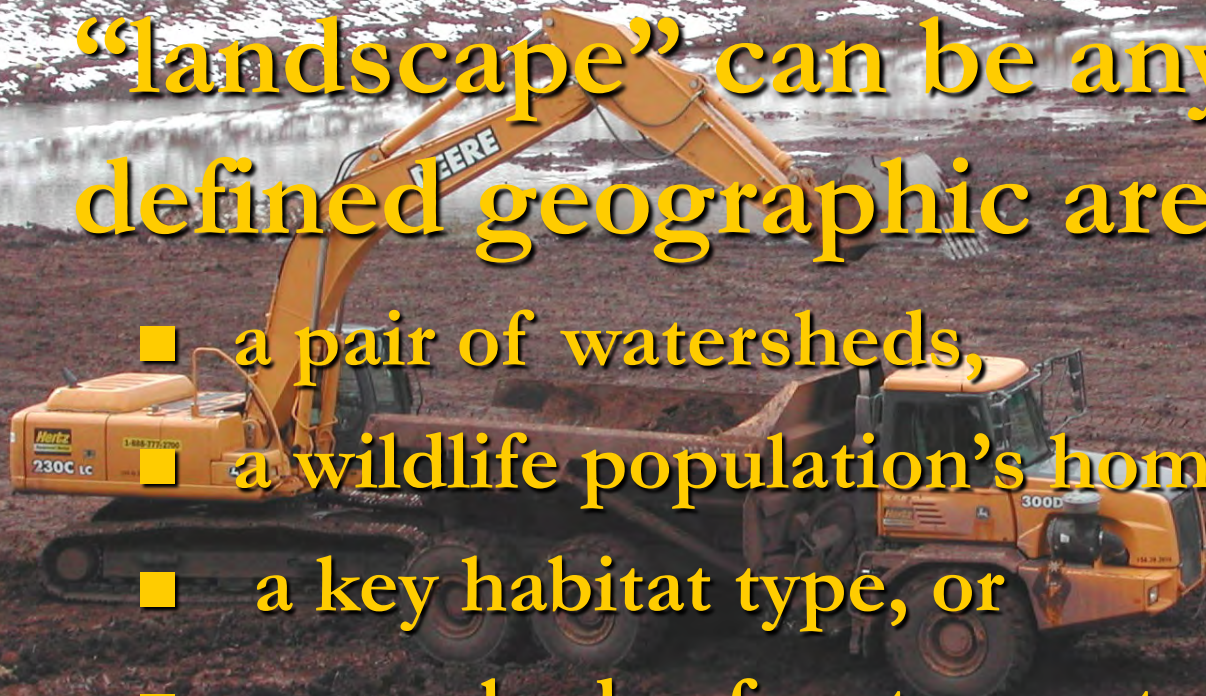
Public Involvement Process

- Citizens identified alternatives April 2010
- Public review of draft alternatives Fall 2010
 - 5 public meetings, emails, and web post
- Executive Committee compiled all comments
- Tri-agency leadership reviewed public preferences
- Status update to SGC on Dec 9th, 2010
- Agencies draft more specific recommendations for review by 5 CACs and public in spring 2011
- Update SGC in summer 2011

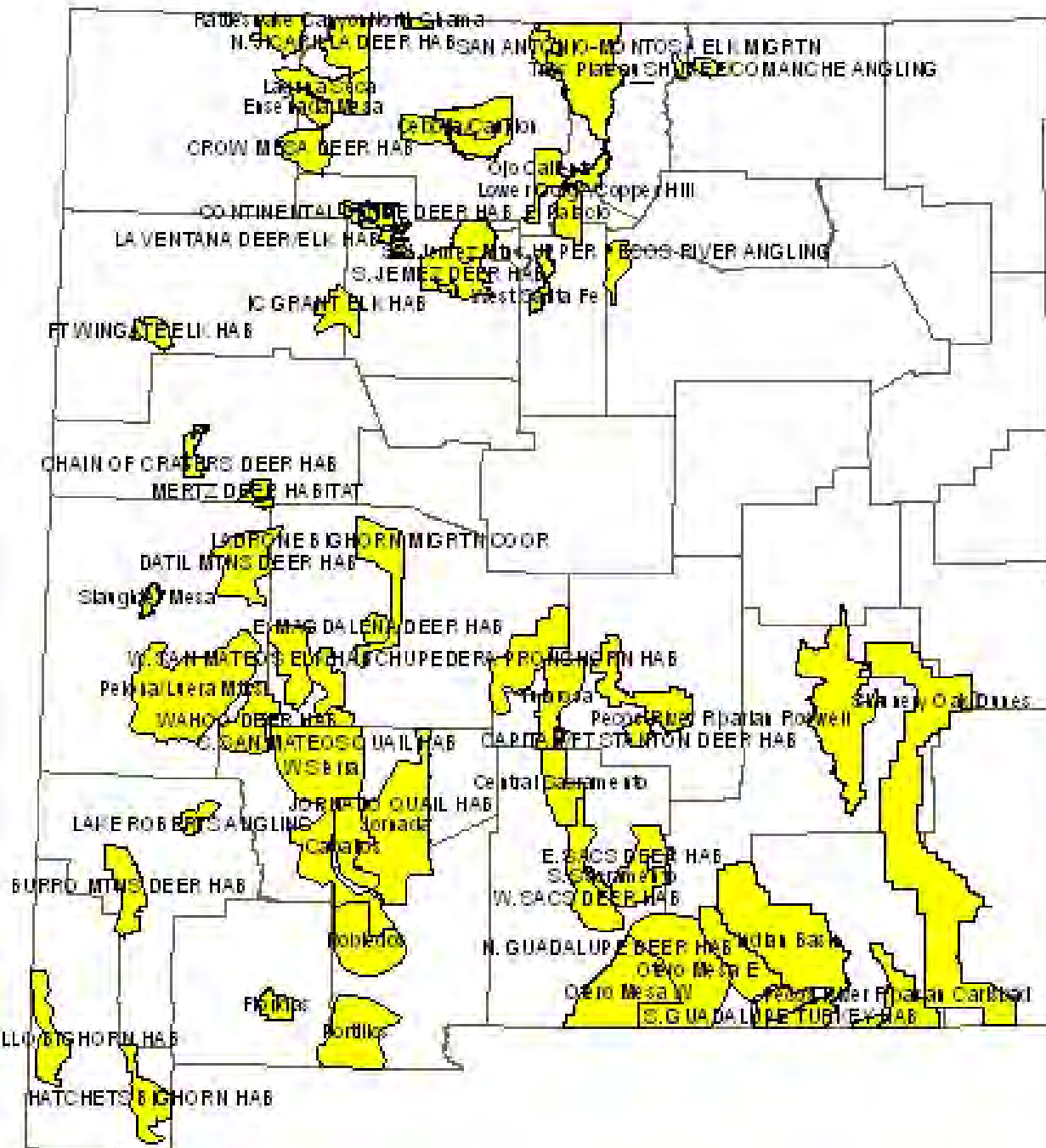
What is a “Landscape”

For planning purposes a “landscape” can be any clearly defined geographic area.

- a pair of watersheds,
- a wildlife population’s home range,
- a key habitat type, or
- even a body of water or stretch of stream
- Etc.



HSP Landscapes



What is a “Landscape Plan”

1. Defined geographic area as mentioned previously
2. Spatially displays past habitat improvements
3. Spatially displays future habitat proposals in next 5 years
4. Ties project proposals back to agency plans for goals and objectives



Why “Landscapes”

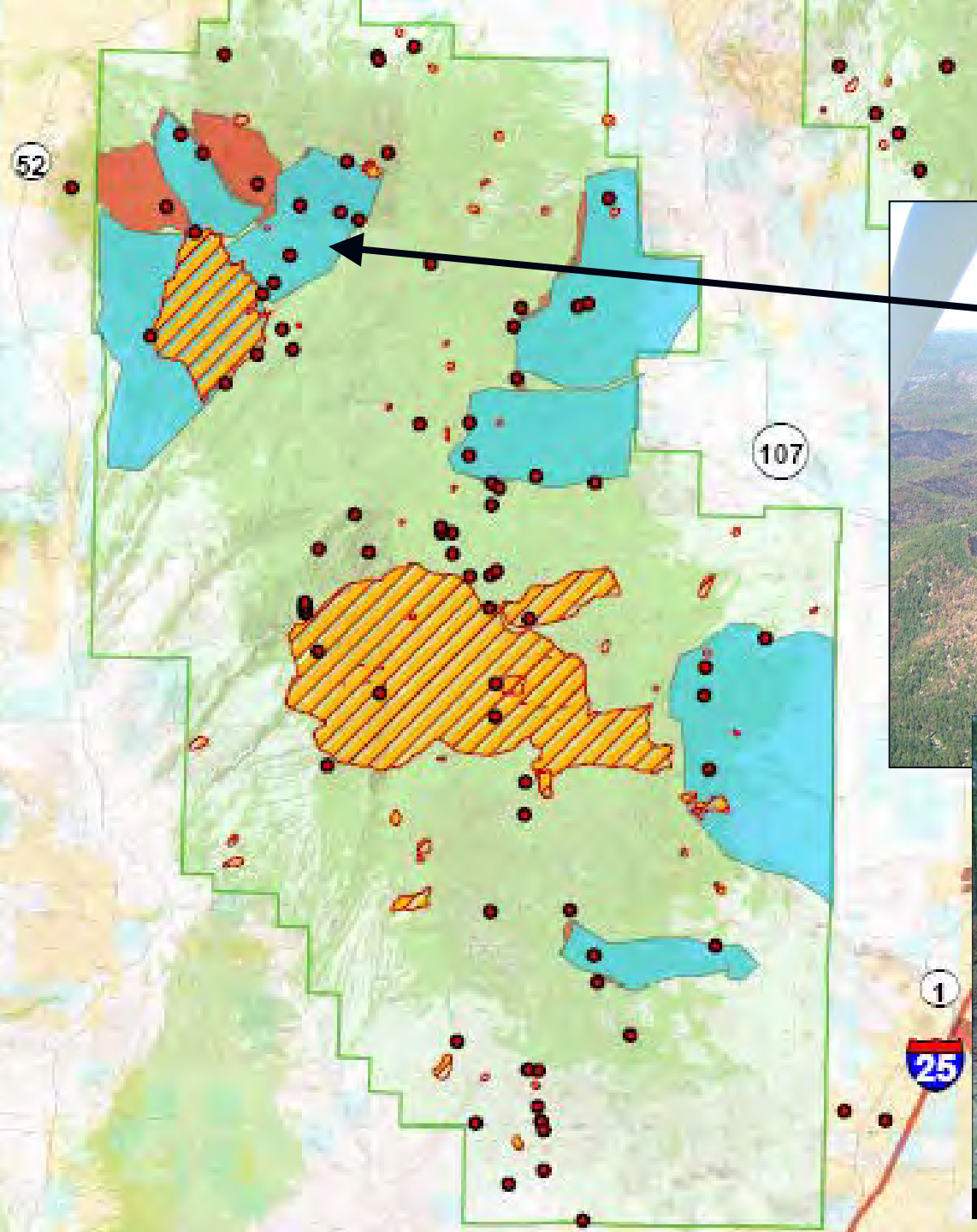
- Show public “whole story”
- Do larger, more impactful projects
- Complications arise and dense funds are needed to do aquatic landscapes
- Some Fed units not ready for work
- Attract more partners/funds
- Incorporate limited G&F personnel in planning

Alternatives to Public

7 Alternative ways of how to allocate HSP funds throughout the state.

5 Alternative ways as how Citizen Advisors decide which proposals are funded.

San Mateo LS



IC Grant LS

Azabache Burn

IC Grant Burn, Ph. 1
IC Grant Burn

Mesa Chivato Burn, Ph. 2

IC Grant Burn, Ph. 1

IC Road Rehab 3

IC Grant Thin/Burn, Ph. 3

Chamisa Losa Spr.

IC Grant Thin IC Grant Research Enc. Thin

Chivato 10 ET

Laguna Blanca ET

Chivato 09 ET

Chivato 08 ET

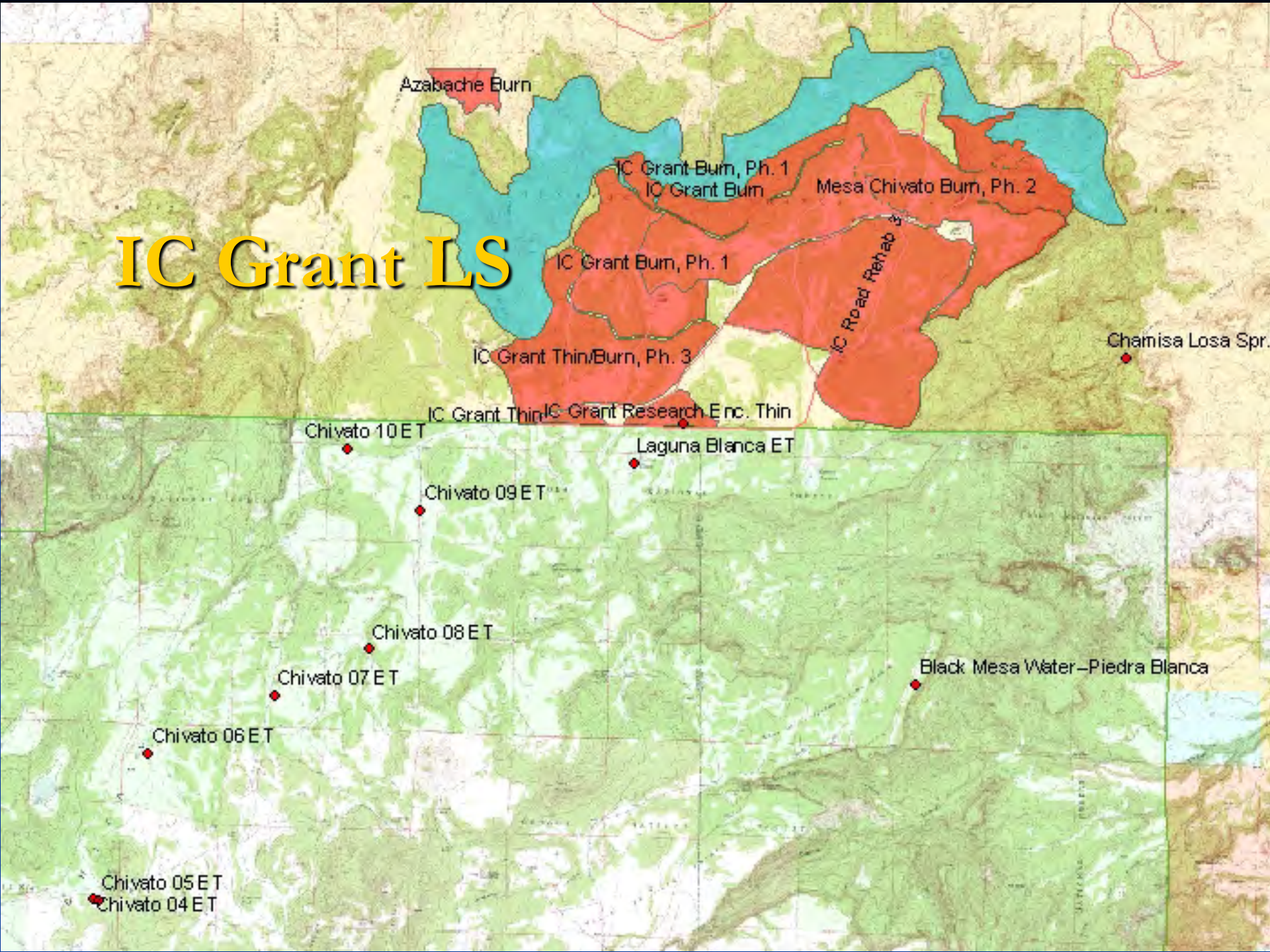
Chivato 07 ET

Black Mesa Water - Piedra Blanca

Chivato 06 ET

Chivato 05 ET

Chivato 04 ET

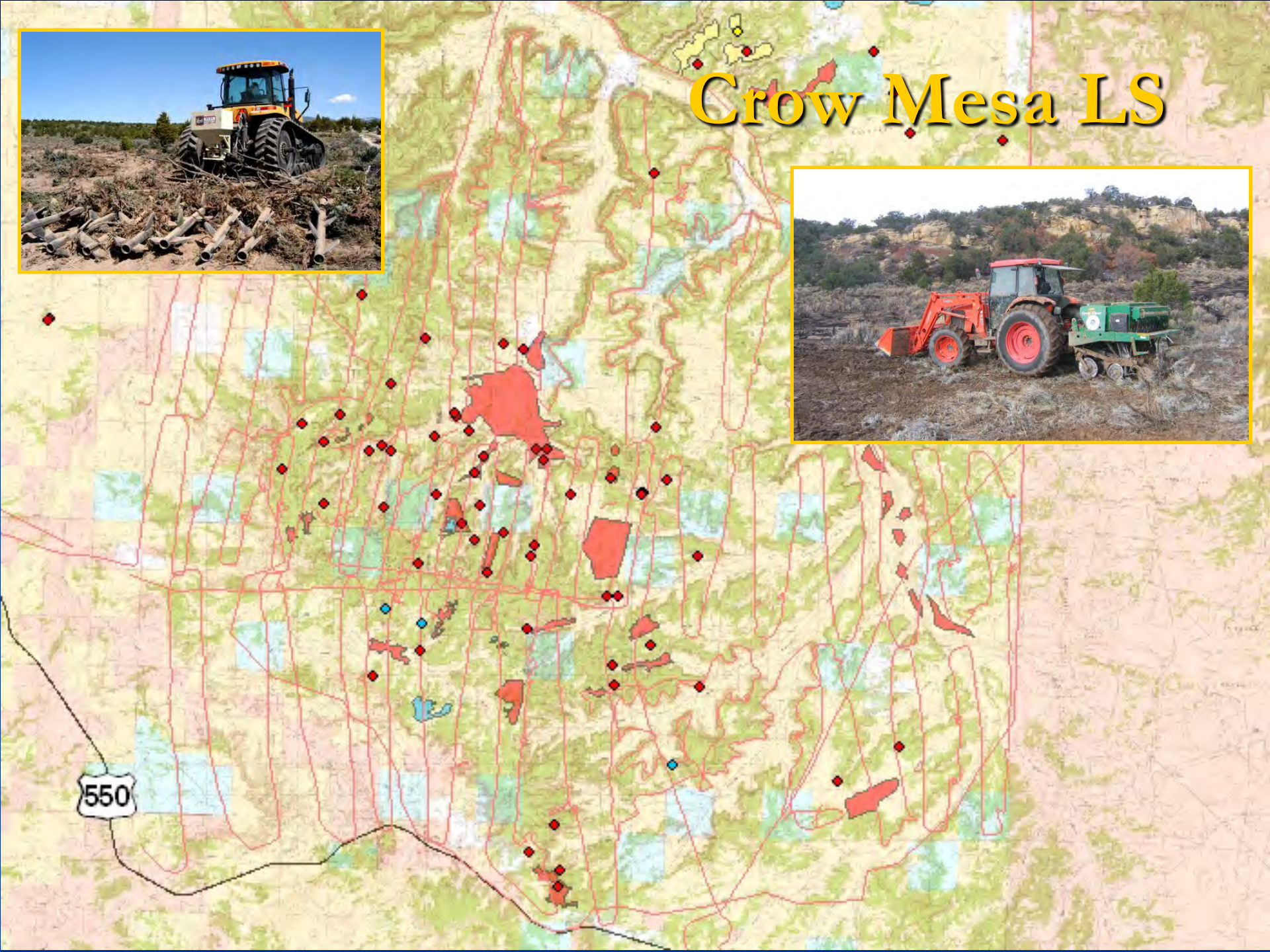


Pelona/Luera LS

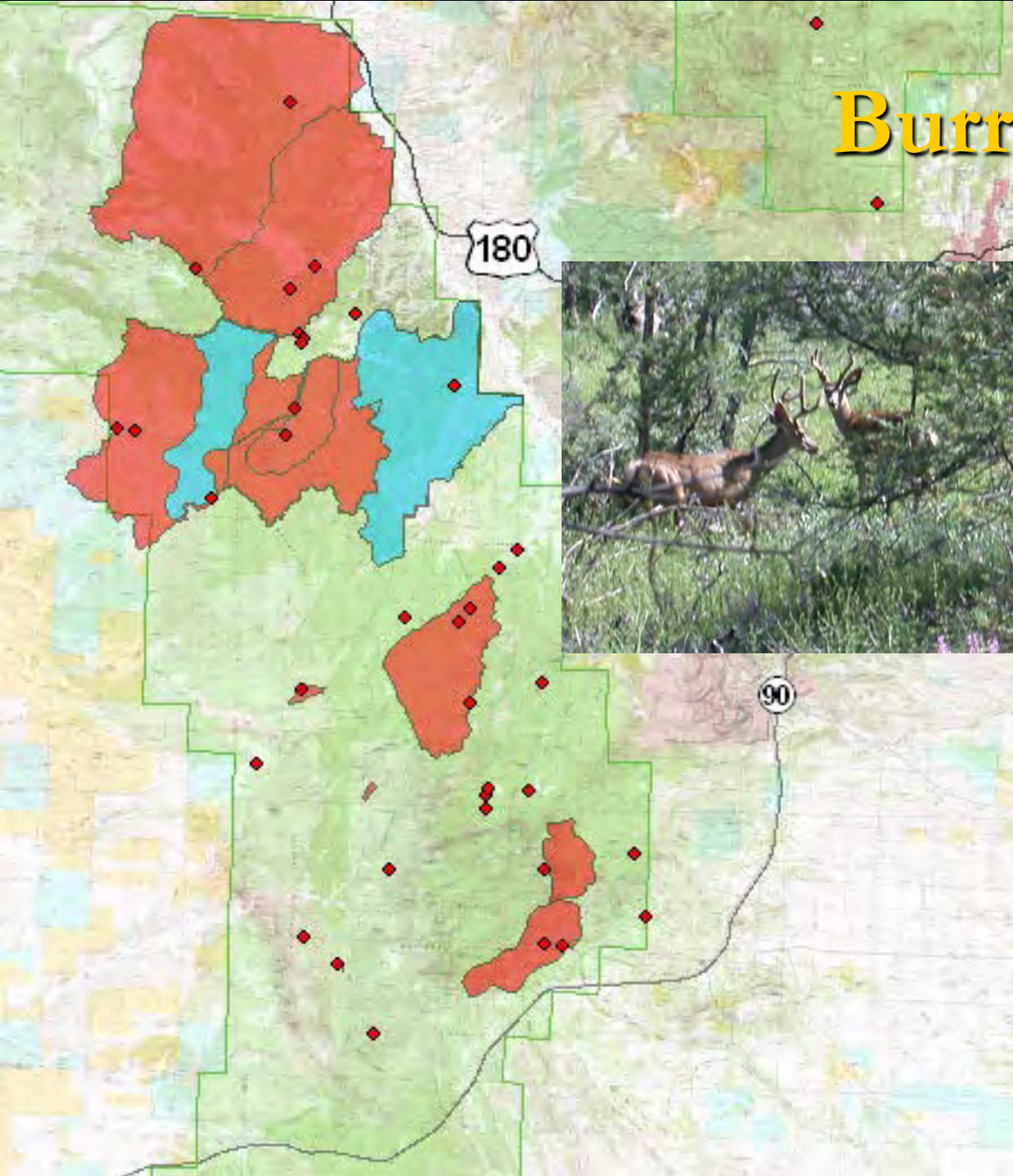
- Treat 180,000 acres in 3 years
- G&F contributed \$190,000
- Matched by another \$435,000
- SLO; L/Os; State Forestry; SWCD; BLM; Mid Rio Grande NWTf



Crow Mesa LS



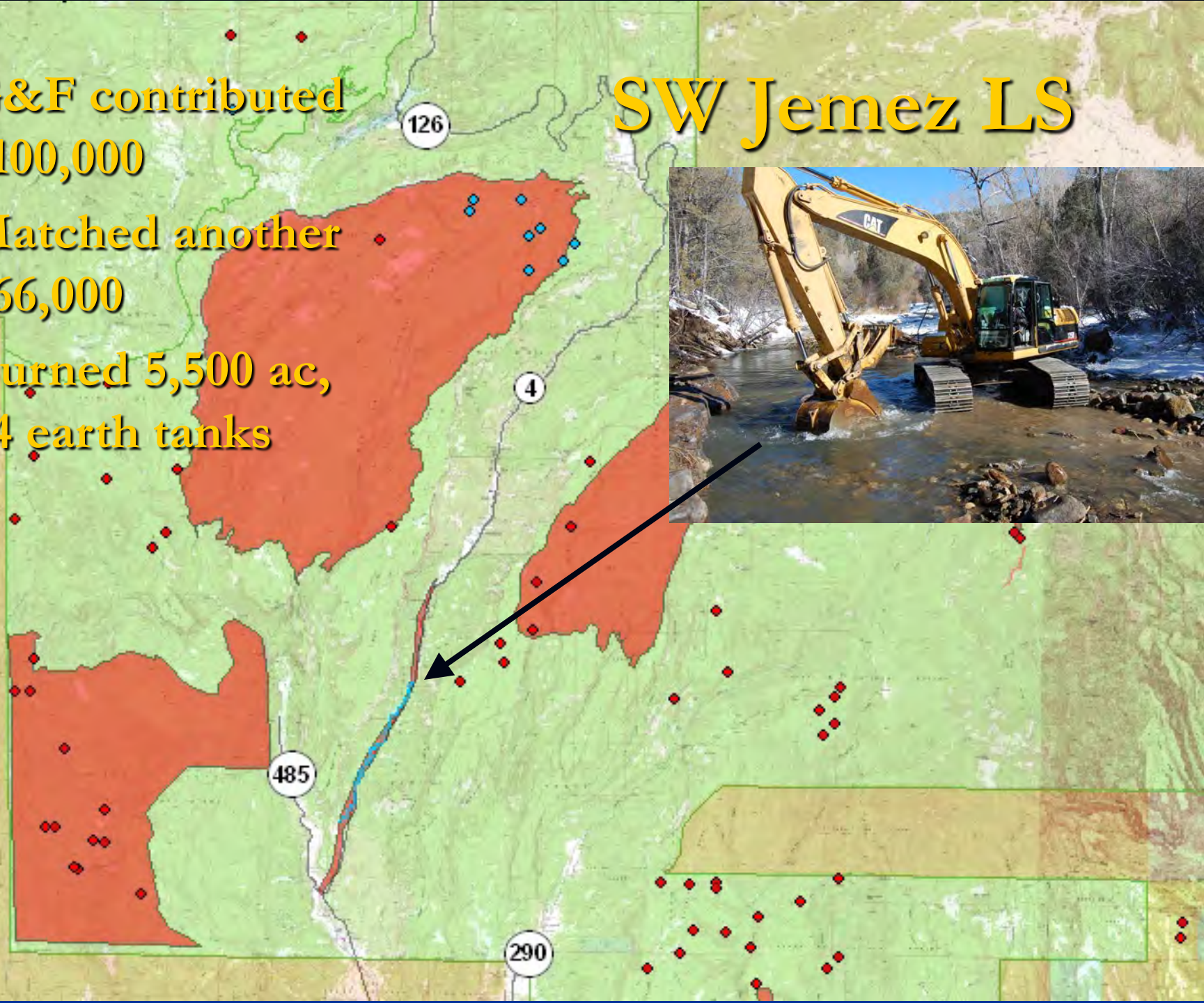
Burro Mtns. LS



- SWCD; L/Os; Env. Dep.; NGOs
- G&F contributed \$300,000
- Matched another \$640,000
- Burned 50,000 ac, 200 erosion structures; and 15 water developments

SW Jemez LS

- G&F contributed \$100,000
- Matched another \$66,000
- Burned 5,500 ac, 24 earth tanks

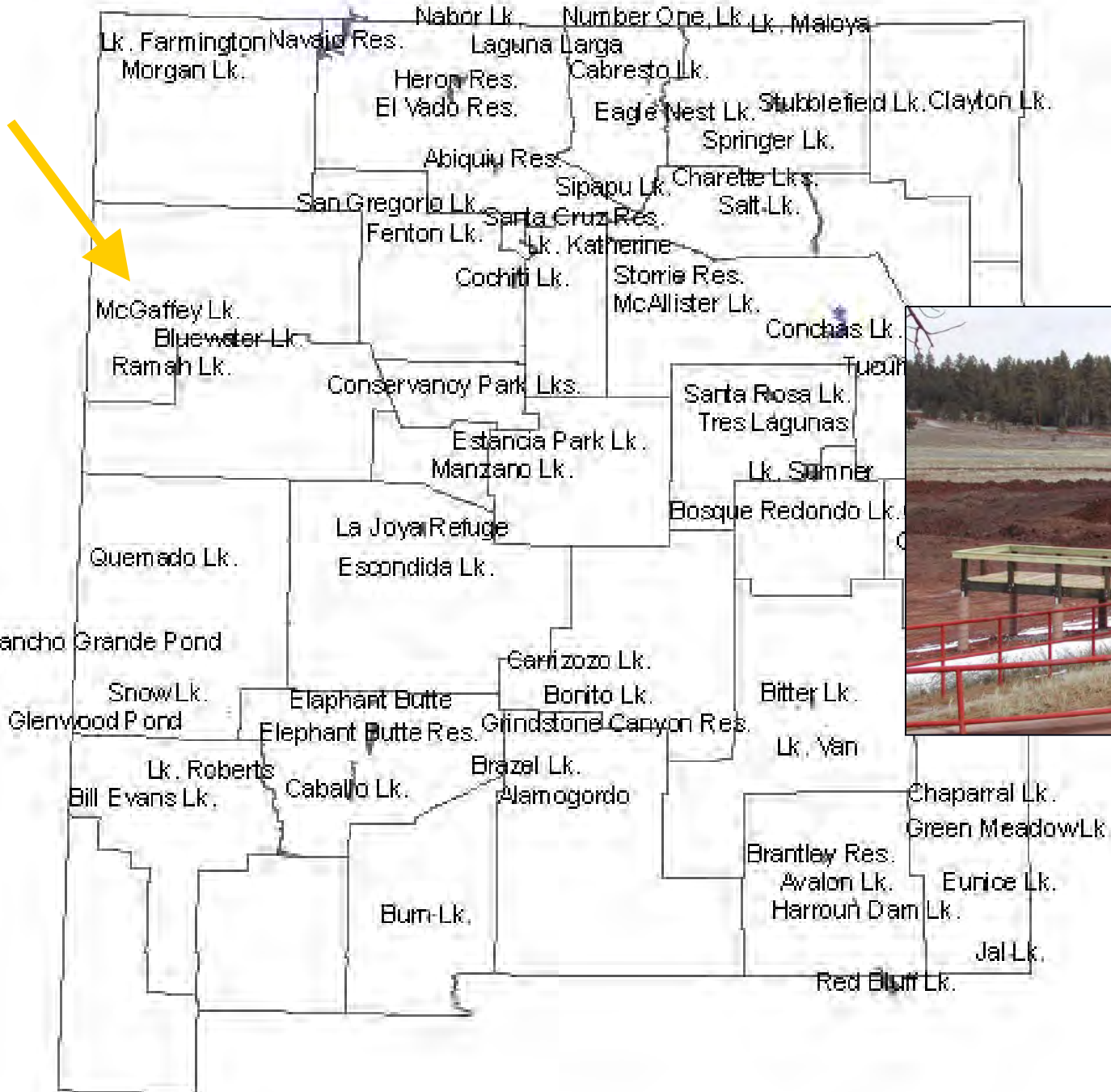


Ladrone Pk. LS

- G&F contributed \$300,000
- Matched another \$300,000 by BLM
- Treated 6,000 ac in pattern, 200 erosion structures; and 1 water development, 10 springs



Lakes of NM



**G&F
contributed
\$130,000**



How to Allocate Funds?

- Alt. A: Use existing formula to 5 regions.
- Alt. B: Revise formula to 5 regions.
- Alt. C: Set aside a portion of funds for proposals generated from landscape plans.
- Alt. D: Set aside a portion of funds for each agency and proposals generated from landscape plans.
- Alt. E: Current funds to be allocated to regular proposals and any new funds from future fee increase to landscape-based proposals.
- Alt. F: Fund best proposals by open competition.
- Alt. G: Any other ideas.



How Advisors Decide?

- Alt. 1: Use existing 5 regional committee structure.
- Alt. 2: Use existing 5 regional committee structure with delegates to a statewide committee.
- Alt. 3: Establish a statewide committee made up of representatives from 5 regions of State.
- Alt. 4: Establish a statewide citizen-agency technical committee (similar to RMEF Project Advisory Committee).
- Alt. 5: Any other ideas.



Future Process

Considering the limited input received from CAC's and the public; agency partners will collaborate and build on their technical expertise to develop alternatives to increase program effectiveness that still respect local opportunities and citizen participation. The Department believes that landscape scale projects and competitive funding strategies are components that need to be analyzed and compared to current procedures. Agency developed alternatives will be presented to the CAC's in the spring for feedback, followed by an additional public comment period. The partners will make their recommendation prior to presentation to the State Game Commission for approval.

We seek your....

- **Advice**
- **Direction**

