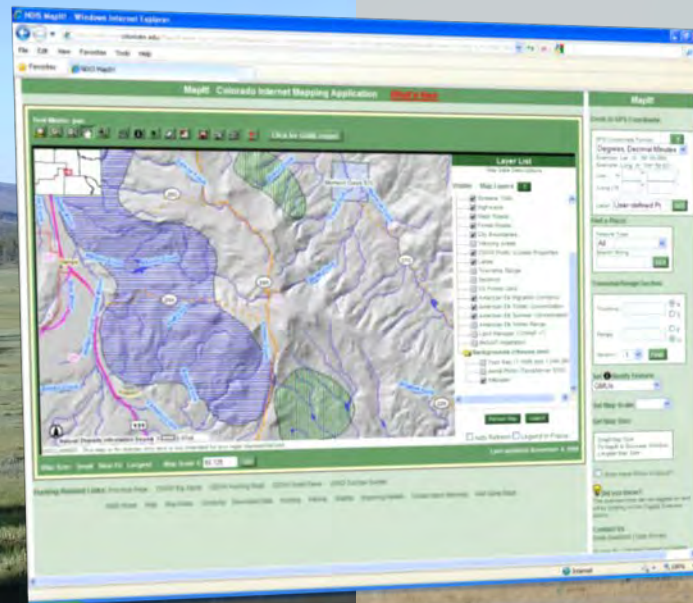


CO-NM Wildlife Corridors Decision Support System



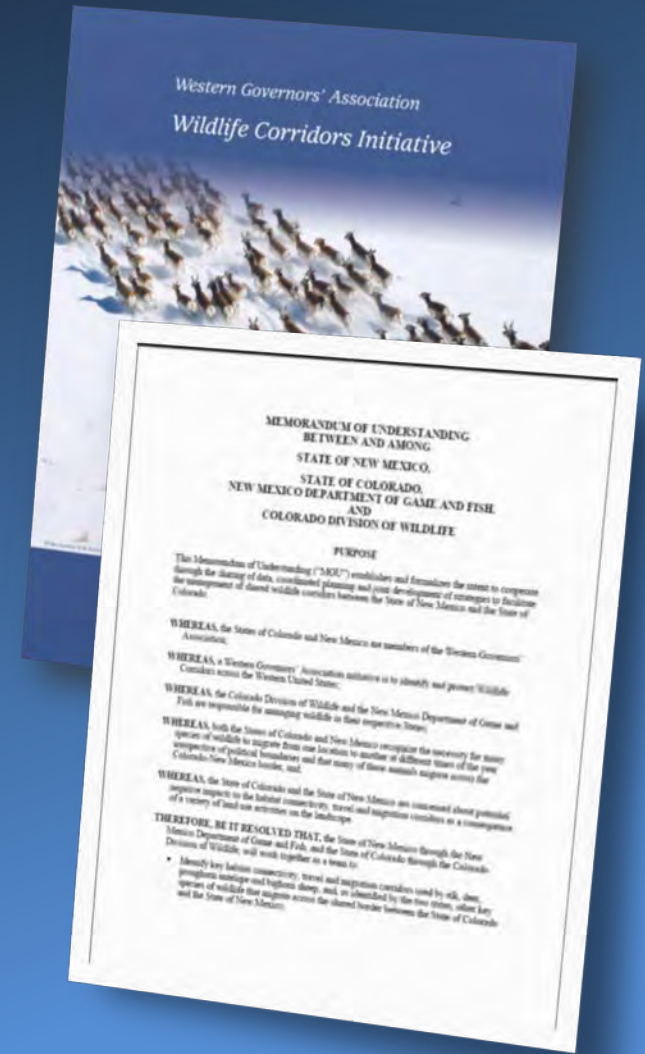
Context

2007
Corridors Resolution

2008
Corridors Initiative Report

- Wildlife Council
- Decision Support Systems

2009
CO-NM MOU



Crucial Habitats and Corridors

Identifying and managing:

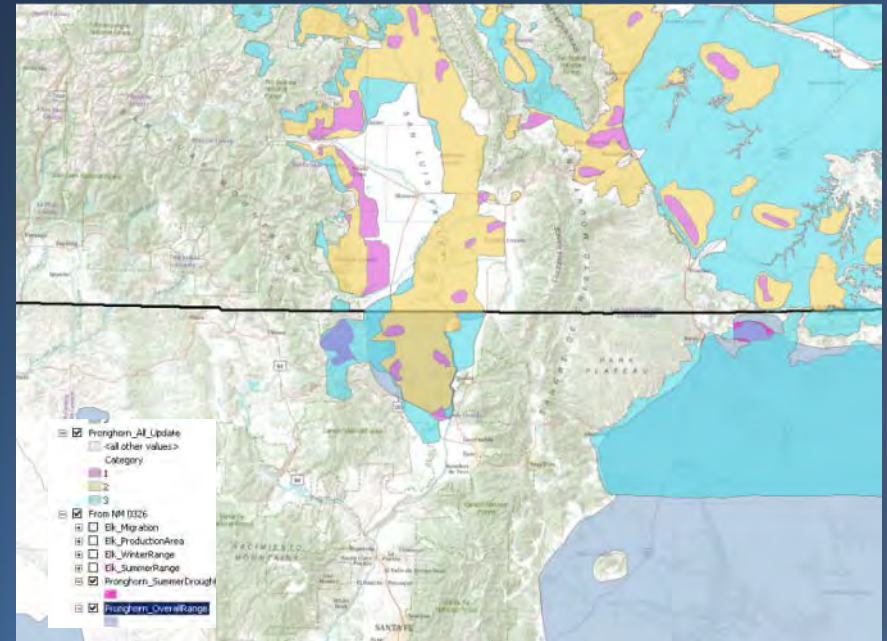
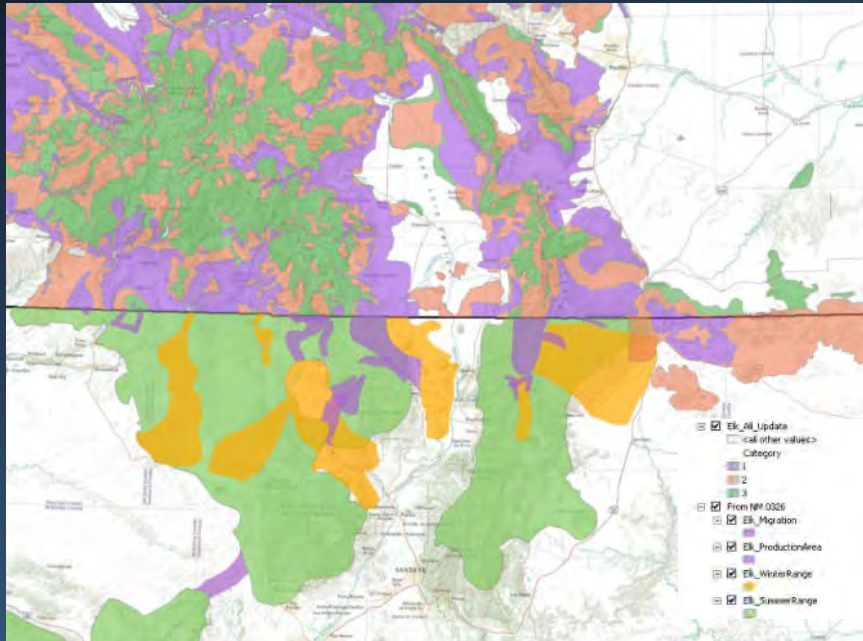
Crucial habitats

lands and waters that support:

- Migration
- Dispersal
- Range shifts



The Border Challenge



Lines of Effort

Process

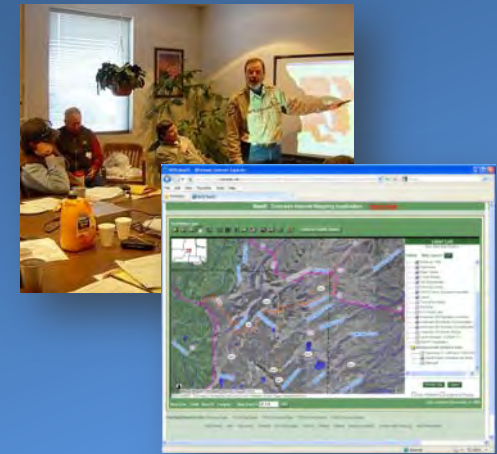
- Uses and purposes
- Users (agency/public)
- Procedures and “business rules”

Substance

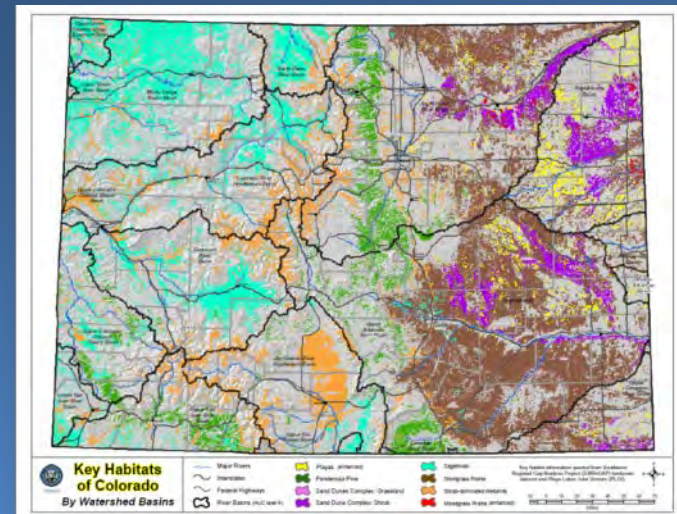
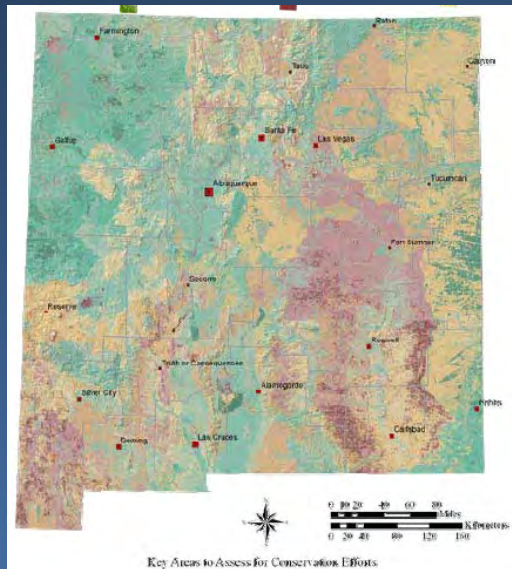
- Target species/habitats
- Resolution/scale
- Threats
- Costs

Mechanics

- Data collection
- Data development
- Data storage/upkeep
- Application development



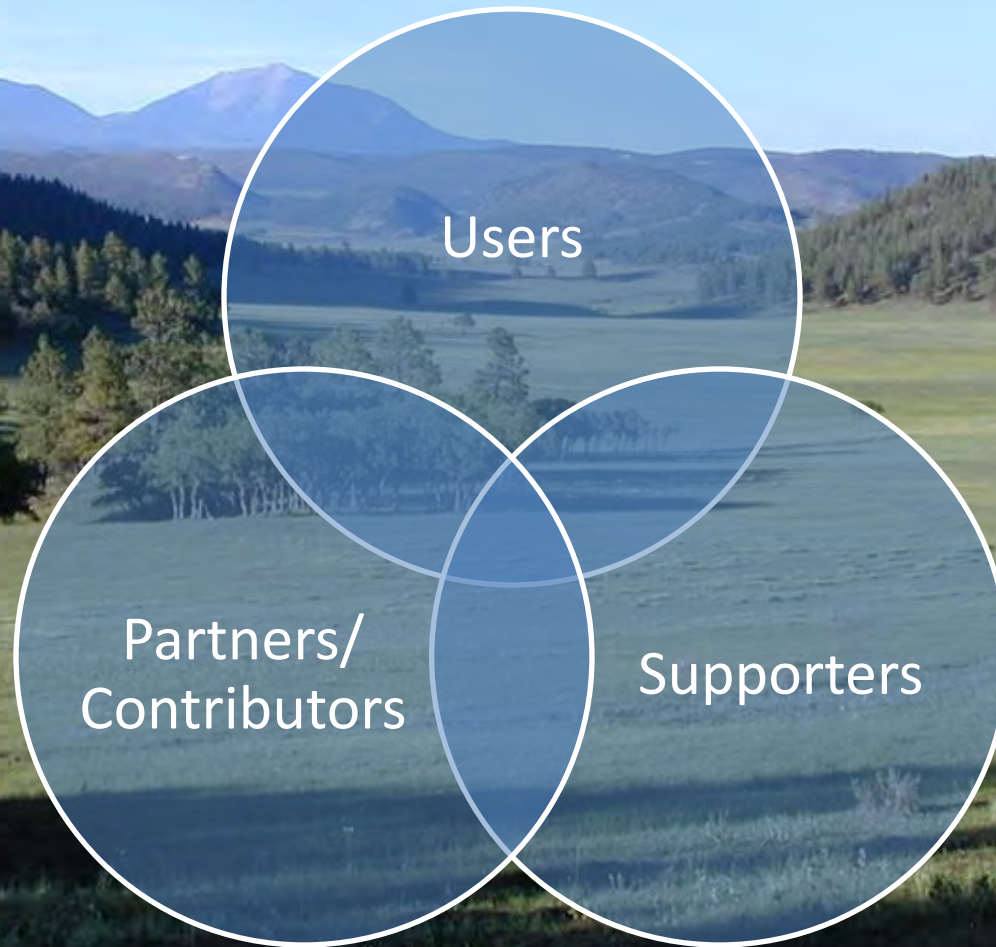
Targets: Species & Habitats



Changing Issues



Stakeholder Engagement



Milestones

Initiate Project	October 2010
Initiate Stakeholder Outreach	December 2010
Project Prospectus: Define Targets, Habitats, Users	March 2011
Assemble Data Layers, Connectivity Analysis	May – September 2011
Internal Pilot Launch	November 2011
DSS Public Launch	February 2012
Final Report	May 2012

Post May 2012:

- Options for state-wide efforts*
- Outreach & training for system users*