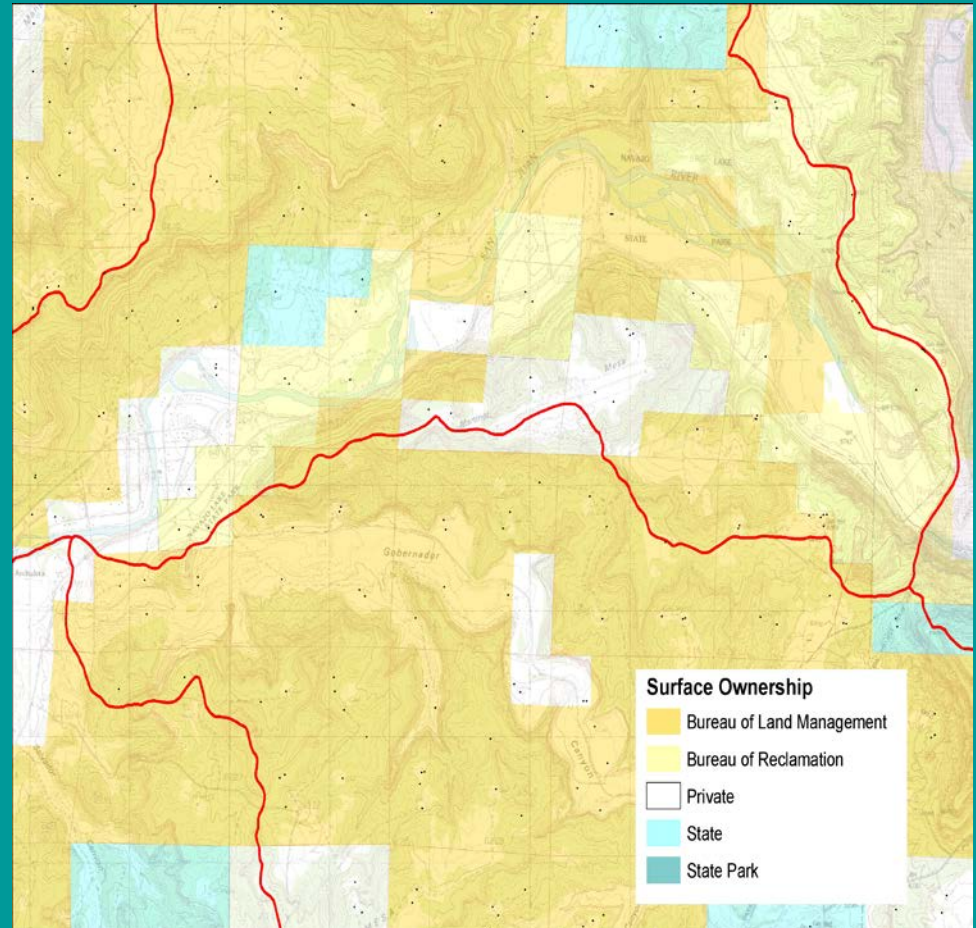


SAN JUAN RIVER TAILWATER FISHERY AN OVERVIEW



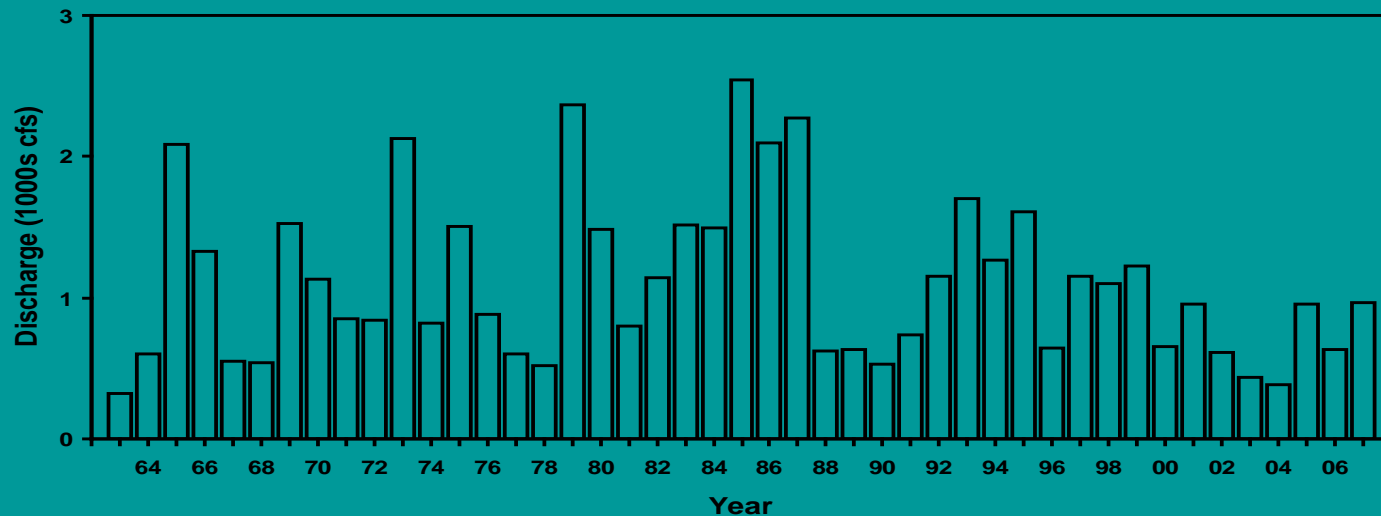
REGULATORY SETTING

- Bureau of Reclamation – Flows and Riparian
- Bureau of Land Management – Uplands
- NM State Parks – Managing Recreational Use
- NMDGF – Fisheries and Enforcement

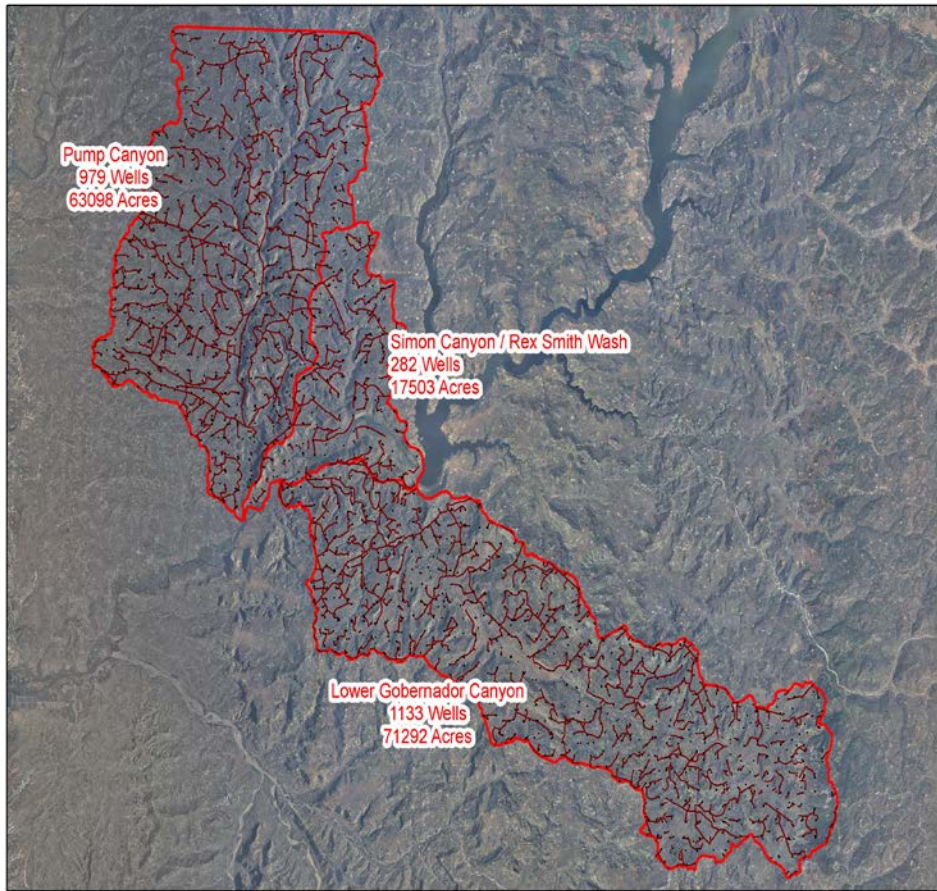


SAN JUAN RIVER FLOWS

- Enabling Legislation
 - Flood Control and Water Development
- Navajo Dam Operation
 - Past
 - ESA Compliance
 - 250 cfs

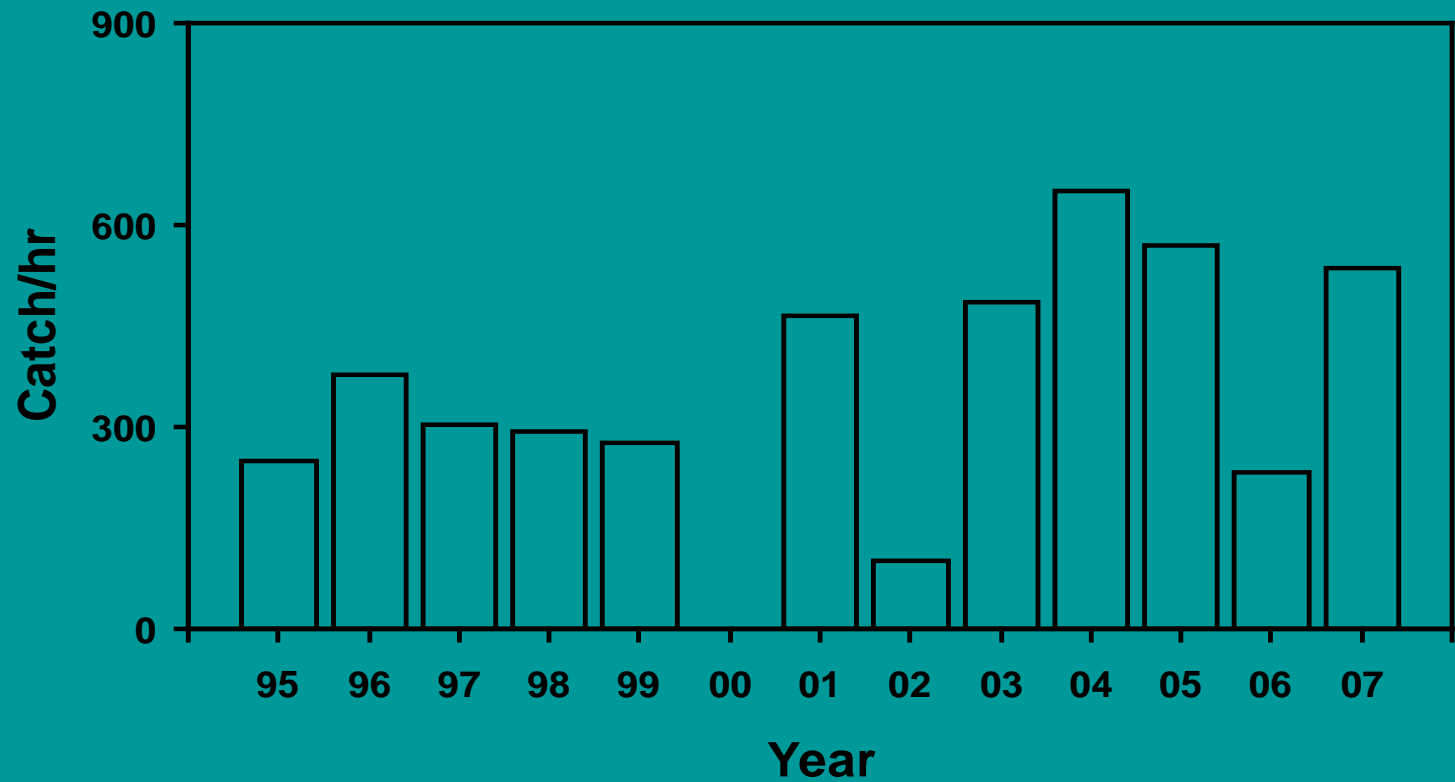


Potential Sedimentation



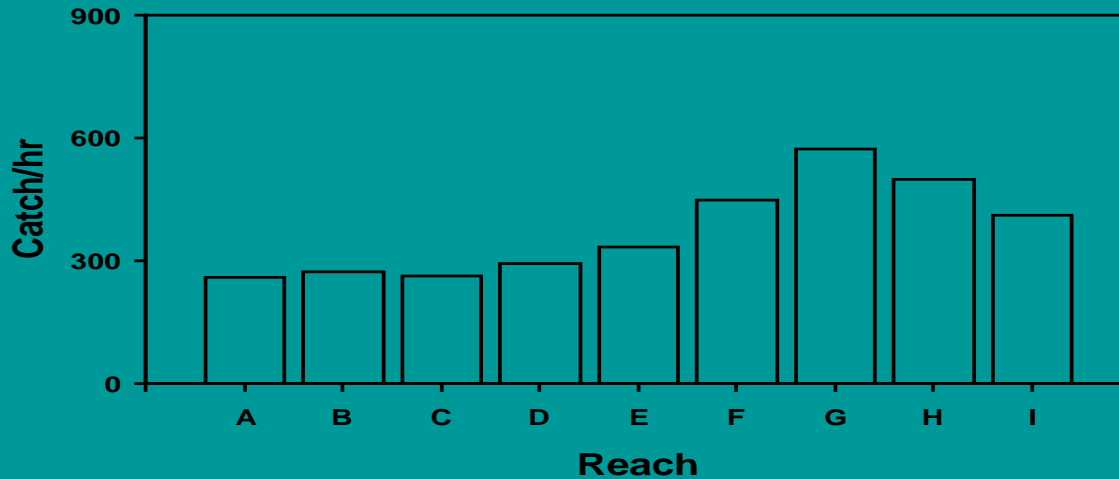
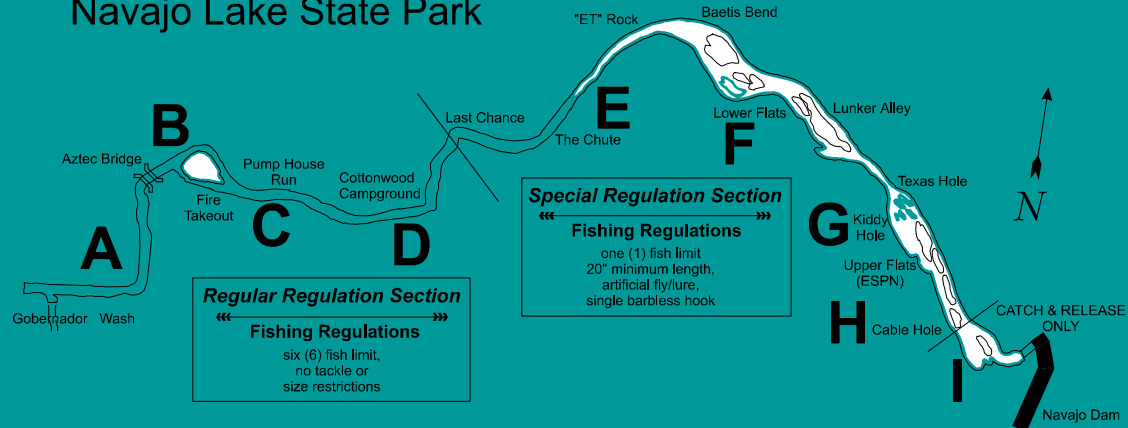
- Watersheds
 - Geology
 - Oil and Gas Development
- Sediment potential
 - Hillslopes – 87%
 - Roads – 1%
 - Well Pads – 12%
- NM Environment Dept. TMDL Study

STATUS OF FISHERY ELECTROFISHING



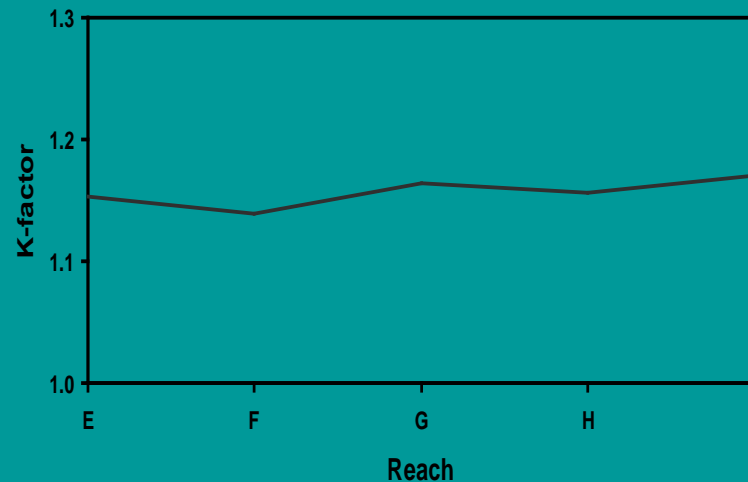
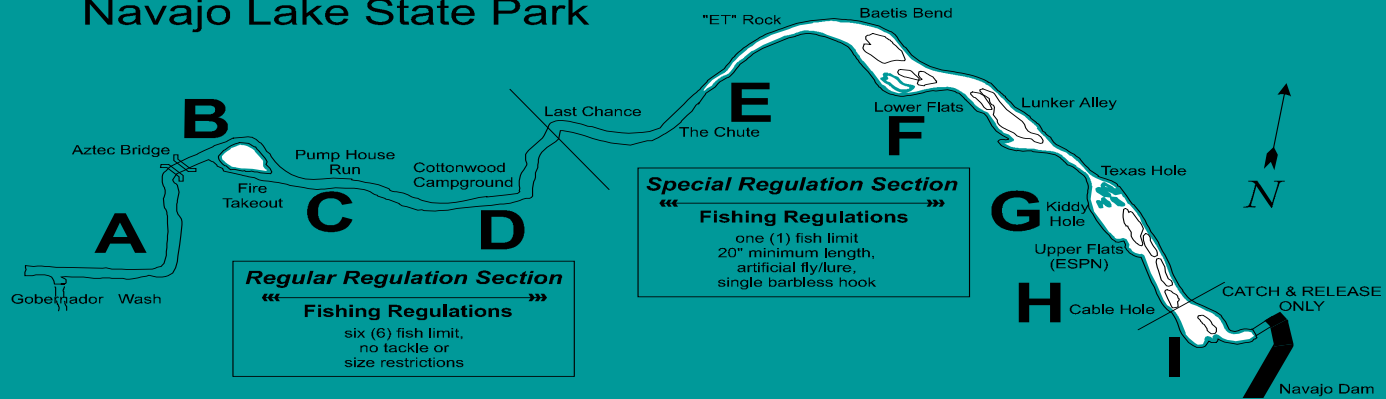
STATUS OF THE FISHERY ELECTROFISHING

San Juan River Recreation Area
Navajo Lake State Park



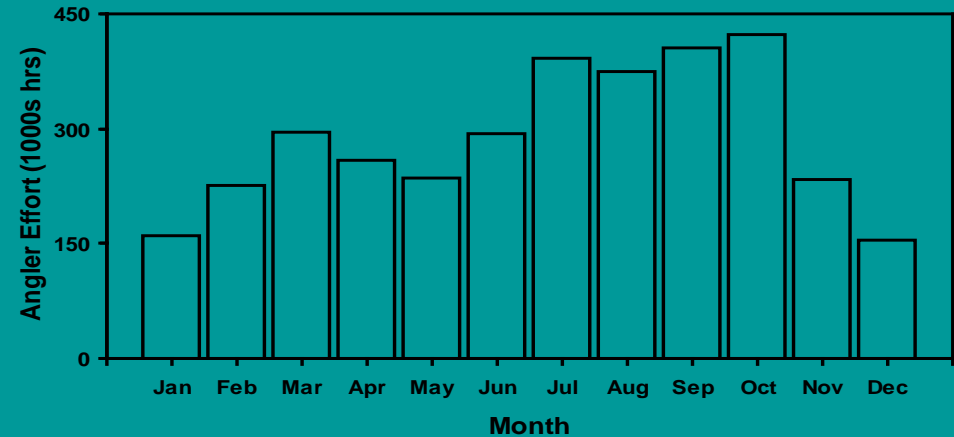
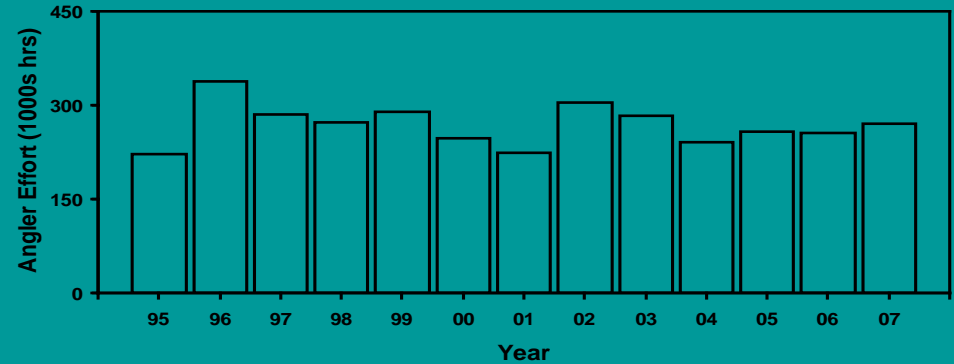
STATUS OF THE FISHERY CONDITION FACTOR

San Juan River Recreation Area
Navajo Lake State Park



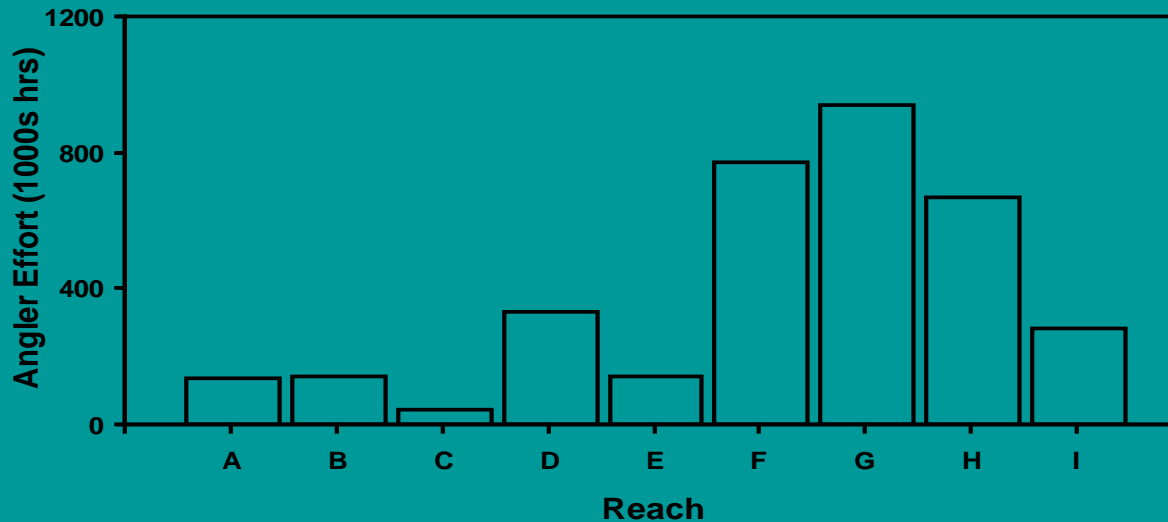
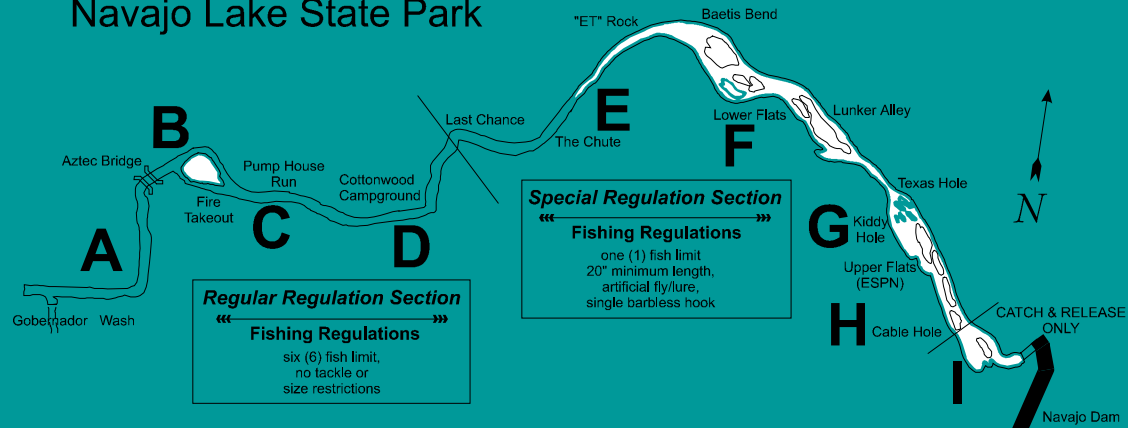
ANGLER SURVEY DATA USE

- Average Number
- Average Hours
- Trends



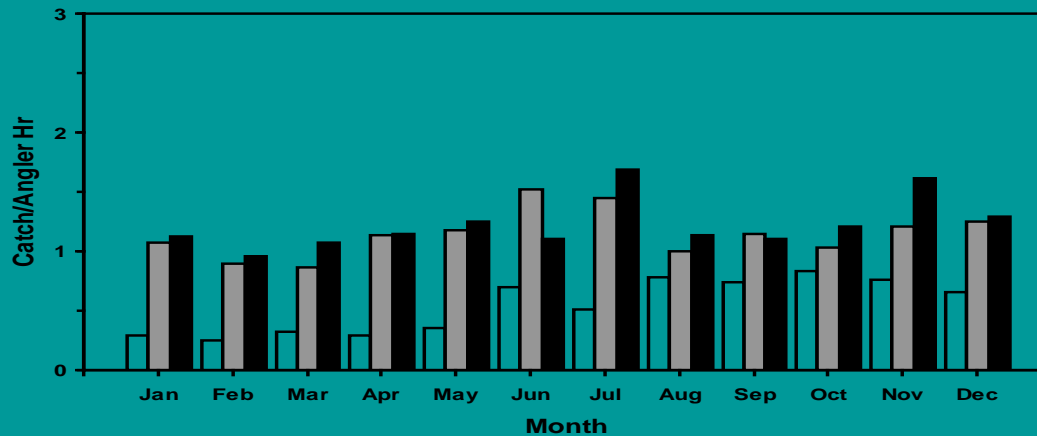
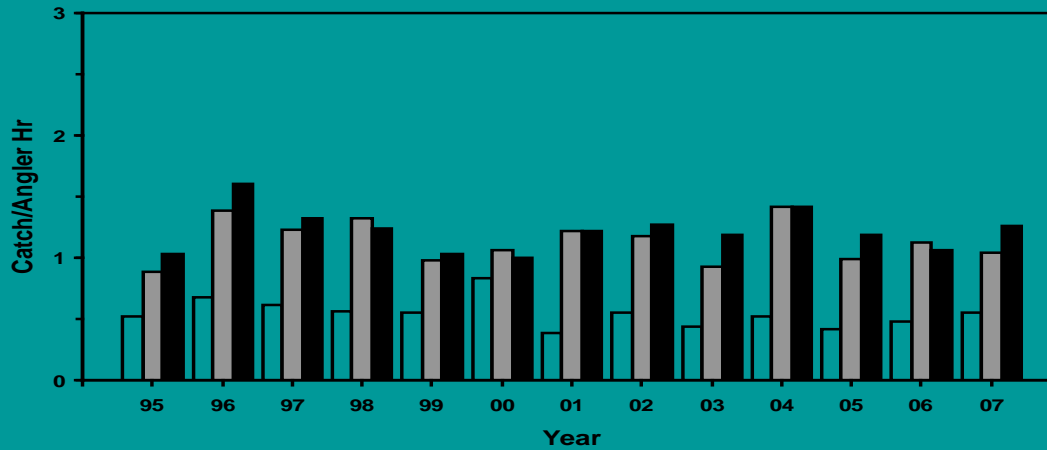
ANGLER SURVEY DATA USE

San Juan River Recreation Area
Navajo Lake State Park



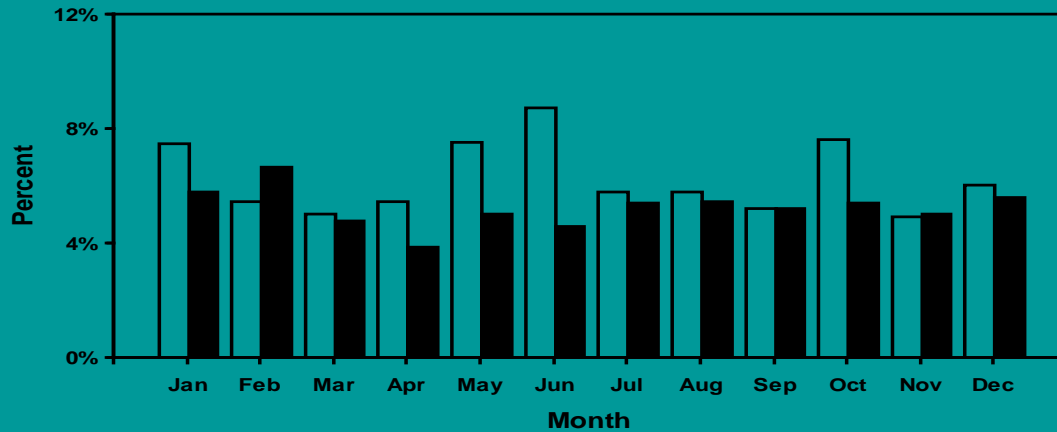
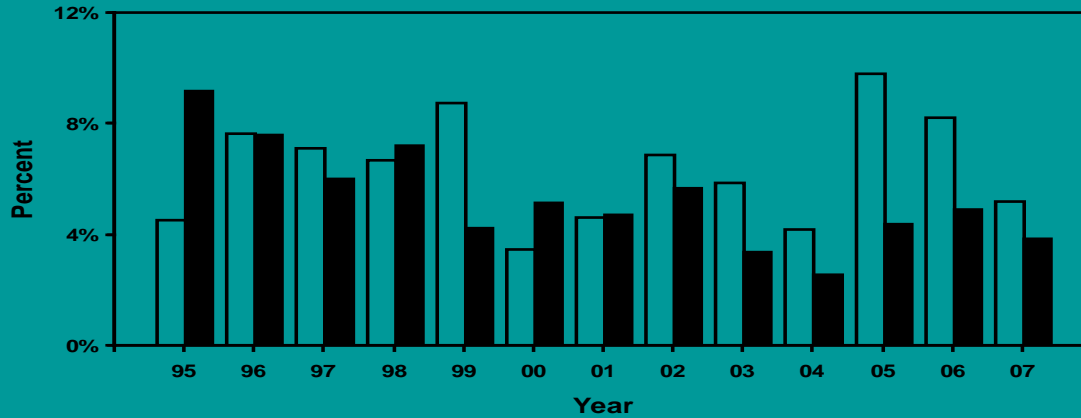
ANGLER SURVEY DATA

CATCH RATES – RR, LSTW, & USTW



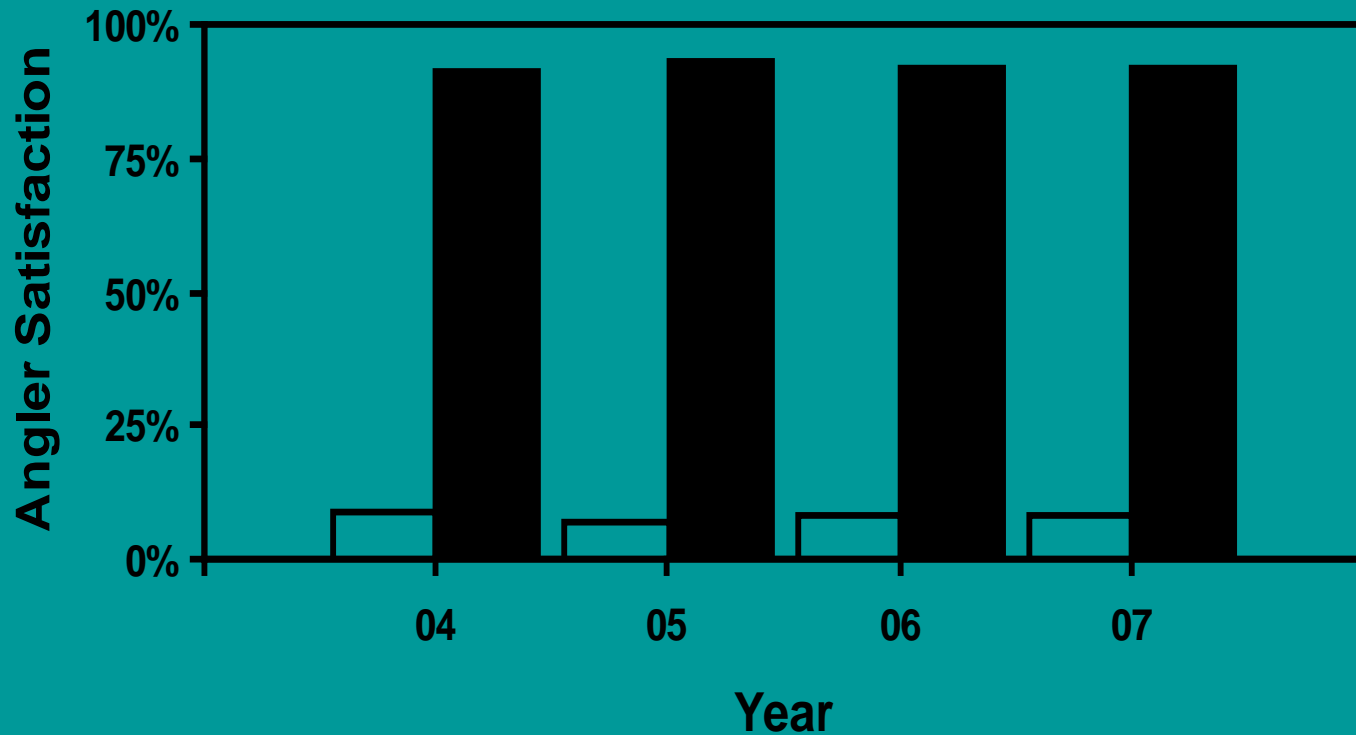
ANGLER SURVEY DATA

PERCENTAGE OF FISH >20" LSTW & USTW



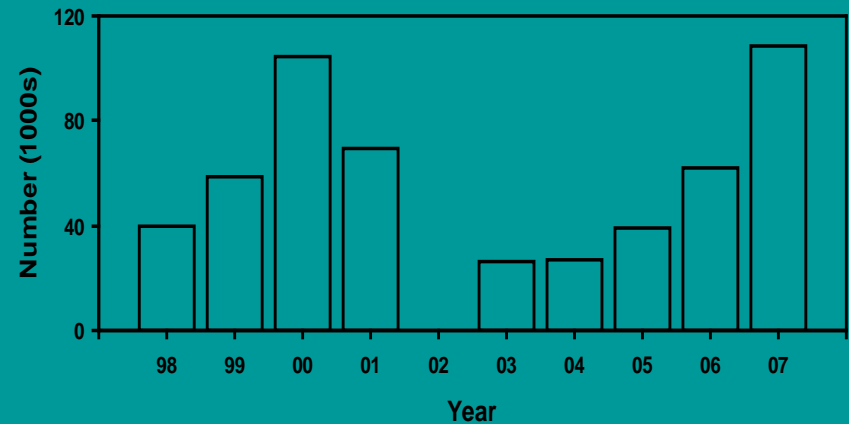
ANGLER SURVEY DATA

SATISFACTION

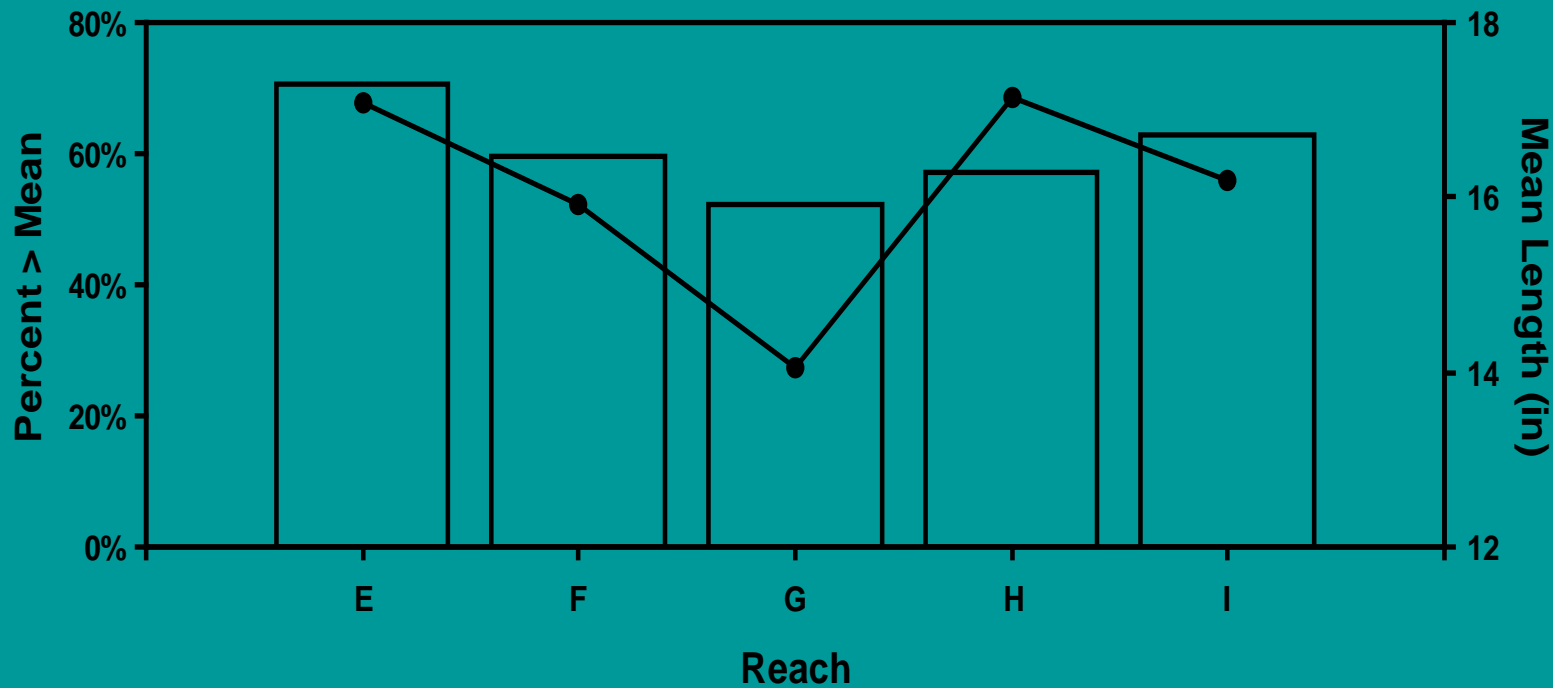


MANAGEMENT STRATEGIES

- Stocking
- Regulation
 - Size Limit
 - Expansion
 - Hooks
- Habitat
 - Partnerships
 - In-stream
 - Riparian



2008 FISHERY SURVEY DATA - STW



SUMMARY

- Watersheds
- Fishery
- Anglers
- Monitor
- Regulate
 - Expand
 - Limit Entry
- Habitat Improvement
 - In-stream
 - Riparian
 - Upland
 - Partner

